



off course

A BI-MONTHLY PUBLICATION FOR SEDA MEMBERS ♣ JULY / AUGUST 2011

IN THIS ISSUE

▶ COLUMNS

what's up? - 2
barn dirt - 4
newsworthy - 16

▶ EVENTS

calendar, (insert)

▶ MEMBERSHIP

member report - 8
eventing standings - 10
schooling dressage - 11
recognized dressage - 12
volunteer hours - 15
meeting minutes - 18
new members - 20
event/volunteer forms - 22
contacts - 24
membership form, (insert)

▶ RESULTS

juniors show - 7
dressage across the lake - 14
serenity schooling dressage - 21

▶ ADVERTISERS

last dance - 3
ree photographics - 9
honey breeze farm - 13
facility/trainer directory - 23
classifieds - 23



Juniors Only Show: Fun in the Sun



HOT, HOT, HOT! The temperature was nearly 100 on the first day of the Juniors Only Show. We started the show right after a fabulous potluck lunch in the pavilion—SEDA members, it turns out, are quite the chefs! No one should have gone home hungry.

The first riders to brave the heat of the day competed in the Equitation and Prix Caprilli classes, which were judged by Gerlinde Beckers, with the assistance of Elaine Harmon. Julia Scheuermann (on Crown Jewel) and Alex Varisco (on Abbeylieux Maid of Diamonds) won the Equitation classes. Sydney Ragas on Lil' Bit O Color was Prix Caprilli Champion and Megan Cato on New Town Rex was the Reserve Champion.

The Clear Round jumping added some excitement to Saturday afternoon. As an added incentive, there's a ribbon every time you make it clear. All the participants seemed to have a good time, and the day ended on a happy note—with ice cream!

Sunday was hot, too, but our judge, Leslie Morris, put her keen eye on the competitors in the dressage and combined test classes. The combined tests ranged from Training Level through Pre-Amoeba. There were dressage tests at many different levels, including a Prix St. Georges ride by Cameron Dauterive on Don Giovanni (Vinnie), and Kalie Beckers did a fun freestyle on Luminous Lady.

The newest addition to the Juniors Show is the Doodle Bug class. This fun test for Lead Line graduates was designed by Elizabeth Cummins, and consists of a walk (trot optional) test that gives points for riders' effective use of the aids—

Continued on page 6

Off Course is published bi-monthly by SEDA, a non-profit, educational organization, and provided as a service to its members.

News items, show results, calendar of events, interviews, reviews, photos, articles on all aspects of Dressage, Eventing, and member activities are incorporated.



Nicole Landreneau
designer / editor

Judi Dauterive and
contributing editors

Gloria Bush
advertising manager

Margaret Rice and
Barbara Merritt
mail mavens



Off Course encourages member submissions but reserves the right to edit, reject, or use materials as and when deemed appropriate. If your item is time sensitive, you may wish to consider placing an advertisement.

Off Course
P.O. Box 266
Destrehan, LA 70047
offcoursenews@hotmail.com

Please obtain permission to reprint any part of *Off Course*.



Off Course is printed on recycled paper.

www.sedariders.org

WHAT'S UP?



The Dog Days of Summer

By Nicole Landreneau, *Off Course* editor

All right. I know they say that time flies faster the older you get ... but, c'mon, I think this is getting ridiculous! How is it possible that half the year is gone already? Christmas will be here before we know, then the new year, and then I'll blink and I'll be writing for the July/August issue again. Goodness! I guess I'd better crank up the priority of the 'fun' stuff for this year or I'll never get around to it!

Hopefully, the rest of you haven't had that problem, and your days have been busy with fun things – like riding and showing and vacationing or just hanging out with friends. We've certainly had a lot of events to attend in early summer, and while these hot days don't find too much on the calendar, that doesn't mean there isn't always something going on.

For most of our members, the recent past was filled with a lot of shows and clinics. As noted on the front page, the Juniors Show was again well attended. Yes, it was hot (ok, beyond hot), but that didn't stop our youngsters from working hard and having a good time. I always enjoy going to that event because it's great to see the dedication these kids have and their enthusiasm is infectious. Plus, the pot luck lunch is always awesome!

Dressage Across the Lake seems like years ago, but we have some great shots to recap the event, courtesy of Marie Cobb. Be sure to check that out, along with all of the other news and Dirt you will find recorded in this issue.

There's always lots of Dirt, come to think of it, and I'm grateful Judi rakes it all into one humorous pile to share with the rest of us. It's my favorite part to read, too; kind of like the *SEDA Enquirer!*

Before I forget, I want to remind all our members to check the awards standings to make sure everything is accurate: we want to be sure our records are correct.

Lastly, many of you have asked how my horse hunt is going. Well, in a word, slow. So many options, such a hard decision! If I was a millionaire, I'd have one in every color. As it is, I have to choose just one from among many fabulous options, and this is a hard thing. It would be nice if I could design the horse I want: one that moves like this, is colored like that, is this tall, lives nearby, and has this type of personality...and the current owners would love to give it away to a loving home. I'll keep working on that! In the meantime, there are a few possibilities I'm pursuing, so we shall see where that goes. Patience truly is a virtue!

To fill the time and keep my riding skills in tune, I've been fortunate to be offered a regular ride on a Bella of a mare who is teaching me a lot. My old guy, Shalom, is now shaved for the summer heat and quite happy with his new 'do...so life is pretty good in the horse department. For now.

Until next time, happy reading and happy riding! ♣

MARK YOUR CARDS FOR THE
Last Dance

SEPT 17-18, 2011

JUDGE: MARIAN CUNNINGHAM "S" VA

TD: LINDA LESTER "r" FL

~~~~~  
\$500 FREESTYLE CHALLENGE

NO USDF/USEF MEMBERSHIPS?  
NO WORRIES...TRY OUR OPPORTUNITY CLASSES!

USEF LEVEL 2 COMPETITION  
RECOGNIZED BY USDF, SWDC, SEDA

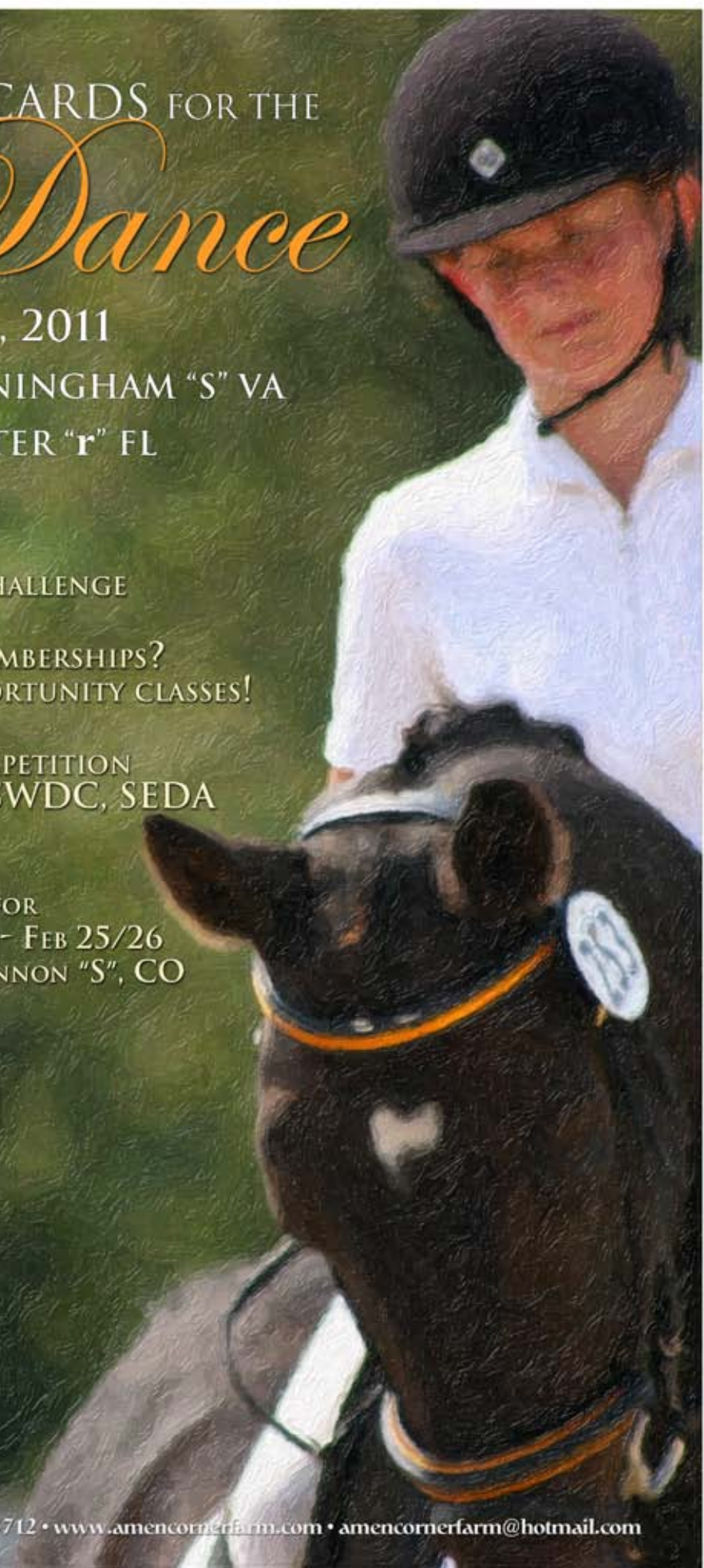
\*\*\*\*\*

SAVE THE DATE FOR  
THE FIRST DANCE, 2012 - FEB 25/26  
JUDGE: JANET "DOLLY" HANNON "S", CO



AMEN CORNER  
FARM

27519 Polo Rd • Folsom, LA 70437 • 985 796 3712 • [www.amencornerfarm.com](http://www.amencornerfarm.com) • [amencornerfarm@hotmail.com](mailto:amencornerfarm@hotmail.com)



# Barn Dirt

As raked by Judi Dauterive



In this latest gripping installment, I go on holiday, **Cameron** wears a dress and **Joanie Mintz** changes her Facebook status from “in a relationship” to “married”. Other stuff happens as well. It’s just one mirth packed moment after another.

**Carmen Hall** and **Ginny Harrison** spent memorial Day weekend at Holly Hill at a **Karen** and **David O’Connor** clinic. **Ginny** rode **Carmen’s** horse, **Photogenic (Lilly)**, in the novice group with **David O’Connor** and her own horse, **The Illusionist (Leu)** in the Training/Prelim group with **Karen. Izzy Hemb** and **Julie Cunningham** went along as grooms and **Ginny** and **Karen** were very thankful for the extra help in the heat. **Izzy** and **Julie** were thrilled to meet the two great Olympians. **Karen** and **David** were incredibly approachable and enjoyed answering questions and were happy to sign shirts, saddle pads etc. for the kids.

**Lilly** had a terrific weekend. She celebrated her fifth birthday and learned a lot while she got to see her first big XC course. **David** thought she was scopey over fences with great gaits and was pleased with her as a developing young horse. **Karen** really like **Leu** and thought he could be a \*\* horse if he kept up the good work. After such an intense weekend of riding two horses, **Ginny** was a little sore and tired but excited about where these horses could go next.



Izzy Hemb, Karen O’Connor and Julie Cunningham.

On May 21st, **Barbara Merritt’s** Arabian mare, **Lovey**, turned 30. The celebration gala extravaganza was held at the lovely home of **Betty** and **Jim Conerly**. The guests all had a marvelous time, especially the honoree who was happy to share her cake with her 34 year old boyfriend, **Chief**. Of course the cake was baked with geriatric equines in mind...it was SOFT!

Perusing the status updates on Facebook, I noticed that **Joanie Mintz** changed hers to “married”. She is now **Mrs. Allen Reeves**. Congratulations **Joanie!** **Alicia Santopadre** also changed her status to “married”; she is now **Mrs. Snyder**. And from the looks of things, it was quite a party, attended by **Laura Hughes**, **Rebecca Doleac**, **Ashley Murray**, **Ruth Roca**, and **Allison Barca**, among others.



Ginny Harrison and clears a jump on Lilly with David O’Connor looking on.

**Megan Cato’s** grandma, **Melanie Edwards** is at it again. She’s always doing something fun. As a school principal, she challenges her kids every year to read a targeted number of books, take computer quizzes and earn points for comprehension. If they meet the goal, she always does something silly like paint her hair purple, go in a dunk tank, ascend in a hot air balloon etc. Since the theme this year was “Wild About Reading”, **Melanie** brought in a white horse and zebra and zebrafied it via a brush and paint pot. **Melanie** rode onto the playground on her zebra and using a wireless mic, she taught the kids about equines in general. Daughter, **Kristie Cato**, took the day off and trailered in the zebra. Needless to say the kids all had a ball.

A couple of months ago, the **Dauterive** family went and played tourist in New Orleans which is fun to do every ten years or so. We checked out the fish in the Aquarium of the Americas and the bugs in the Insectarium – most of which I can see in my barn on any given day... I paid money for that?! Anyway... The highlight of the trip was a visit to the dress design studio of **Harold Clarke**. **Harold** designs the most exquisite gowns and recently did a week’s worth of gowns for **Vanna White** when *Wheel of Fortune* was filming in New Orleans. Harold made



Melanie Edwards entertains her students with her 'zebra' demonstration.

my wedding dress, so we've been friends ever since. He's been dying to dress **Cameron** up in something and as soon as we got there he made her put on one of the gowns that **Vanna** wore on *Wheel of Fortune*. He also made her wear impossibly high heels and go up and down the stairs for pictures. **Cameron** acquitted herself well for a girl who mostly wears breeches and riding boots and didn't break any of her arms and legs - bonus! Oops, forgot to mention, **Cameron** turned 15 and celebrated the occasion by making her own pizza at Pizza Man - always entertaining.

Also on the birthday front, **Logan Barowka** celebrated her 8th big day at the SEDA Juniors Only show. Mom, **Jamie**, brought a cake that was as big as **Logan**. It was delicious chocolatey goodness enjoyed by everyone.

**Elaine Mendel-John** had a heat induced moment at Dressage Across the Lake. I'm saying "heat induced" instead of "senior" because it sounds better - we all need an excuse now and then. She was all tacked up and ready for her test with her peeps gathered round. One foot in the stirrup, up and over...almost. She was still wearing her long grooming apron which impeded her progress somewhat. I guess she could have gone in a side saddle class,

she looked the part.

**Lee Scott** now has a Brass Band! She has taken up the **Trumpet**. Before you cover your ears and run screaming from the room, **Brass Band AKA Trumpet** is her new horse. He's a 5 year old gelding from Flower Farm in PA. Lee likes the New Orleans connotations, **Trumpet's** sire is **Jazz**. She wasn't sure she wanted a young horse again, but he proved unflappable in his test rides and with all the poking and prodding associated with a thorough vetting. I won't say anything about them making beautiful music together, don't worry. In the process of buying **Trumpet**, **Lee** reconnected with an old friend who lives north of Baltimore. **Lee** used to foxhunt with her back when she lived in DC. They were also summer camp counselors together back in the Jurassic. Not having seen her for years, **Lee** found herself spending the night twice in two



Happy 30th Birthday to Barbara Merritt's Lovey.

weeks! Just one of the side benefits of horse shopping.

Having just graduated from LSU, **Emily Embree** now finds herself in Albany, NY. She has taken the position of Barn Manager/Head Trainer at Birch Hill Farm. Her horse, **Crescent City Classic** has made the trip with her. While we all might be a little envious of her beating the heat, just wait until winter.... Bwahahahahaha!

Unfortunately for us, by the time you read this, we'll be back from our trip to England. I am so looking forward to spending a couple of weeks in the amazingly charming Cotswolds. **Cameron** is going to be training with **Pammy Hutton** (one of the Grande Dames of British Dressage) and her son Charlie. I haven't told my husband yet, but I sold a couple of his vital organs to pay for all this (I need all mine - they're VITAL). Boy, is he going to be surprised when the men in white lab coats show up one day to collect!

And on that bombshell I shall leave you to ponder the deeper meaning of it all.

Send me the dirt.

ponyparade@hotmail.com. ♣



Cameron Dauterive models Vanna White's gown.



*Corryn Faciane and Bobby Sox relax in the shade.*



*Cameron Dauterive on GF Windchime.*



*Happy 8th Birthday to Logan Barowka who celebrated with a white pony cake!*

*Juniors Show .... continued from page 1*

there is even a score for the salute! Our first crop of Doodle Bugs included: Grey Cummins on Appy Go Lucky, Kylie Reitzell and Callie Cefalu each had a ride on Erysti and Maddie Mazzetti on Snickers Satisfies. The riders did such a good job, they all tied for first place! Erysti won a special award for Oldest Horse/Pony at the ripe old age of 31.

Kalie Beckers and Traveler were Champions for the Combined Test and for best CT dressage score. Sydney Ragas and Lil' Bit O Color were the Dressage Champions; Sydney was also the Intro class champion.

Each day at lunch there were raffle prizes for participants. There were also a variety of prizes for the horses and riders, including:

*Horse Parent Survival Kit* – the Cefalus

*Golden Ollie Award* (high score “plain” bay horse) – Vinnie  
*High Score Mare* – Lil’ Bit O Color  
*Oldest Horse* – Erysti  
*First Show* – Cali Cefalu

Again this year, we did not award the “Poise Under Pressure” award which is reserved for the rider who shows poise and sportsmanship under adverse circumstances ... because there were no “problem” rides! Paula Gregory promised to keep sponsoring that prize, if it keeps working to prevent unexpected dismounts.

The Juniors Only Schooling Show would not be possible without the support of our generous sponsors. Thanks go out to: Amen Corner Farm, Bridles and Britches, EquiBest Equestrian Center, the Haven Equestrian Center, Kim Keen, the Grandbeck Farm, Elaine Harmon, 2 Dutch

Ranch and Ted & Lolly White.

We also would be lost without our wonderful volunteers, especially: the Beckers Clan, Gerlinde, Kalie, Emma and Mark; Elaine Harmon; David Banister; Judi Dauterive; Deb Epperson; Erin Hebert; Rebecca Doleac; Chrissy West; Laura Hughes; Betty Connerly; Claire Draper; Kim Schultz; Elaine Mendel-John and Ted and Lolly White. Nicole Landreneau and Ted White documented the event in pictures.

Last but by no means least, we need to thank our judges: Leslie Morris (dressage), Gerlinde Beckers (equitation/prix caprilli) and Barbara Hoopes (jumping).

Thank you to our competitors, their parents, the trainers and most of all, the saintly ponies and horses – see you next year! ♣

# Juniors Only Show Results

| RIDER | HORSE | DRESSAGE PEN | FINAL |
|-------|-------|--------------|-------|
|-------|-------|--------------|-------|

## TRAINING LEVEL A

|            |           |      |      |
|------------|-----------|------|------|
| Alex Daray | Beach Boy | 49.1 | 61.1 |
|------------|-----------|------|------|

## USEA BEGINNER NOVICE

|                   |                         |       |       |
|-------------------|-------------------------|-------|-------|
| Kalie Bekers      | Traveler                | 29.05 | 29.05 |
| Kalie Beckers     | Little Miss Independent | 33.34 | 37.34 |
| Cameron Dauterive | GF Windchime            | 37.62 | 37.62 |

## TADPOLE

|                  |                  |      |      |
|------------------|------------------|------|------|
| Stevie Lynn Roth | Bobby Sox        | 31   | 31   |
| Jaide Guillory   | Crown Jewel      | 36   | 36   |
| Megan Cato       | New Town Rex     | 40.5 | 40.5 |
| Logan Barowka    | Brighton My Life | 41   | 45   |

## POLLYWOG

|                |                            |      |      |
|----------------|----------------------------|------|------|
| Rebecca Rhode  | Luna                       | 34.5 | 34.5 |
| Alexis Laguna  | Zutch                      | 41   | 41   |
| Sydney Schultz | Snickers Satisfies         | 44.5 | 44.5 |
| Alex Varisco   | Abbylieux Maid of Diamonds | 41   | 49   |

## AMOEBA

|                   |                   |       |       |
|-------------------|-------------------|-------|-------|
| Sydney Ragas      | Lil' Bit O' Color | 31.88 | 35.88 |
| Julia Scheuermann | Crown Jewel       | 36.25 | 36.25 |
| Svenya Stoyanoff  | Handyman          | 41.25 | 41.25 |

## PRE-AMOEBA

|                |           |       |       |
|----------------|-----------|-------|-------|
| Ann Byerley    | Snickers  | 31.25 | 31.25 |
| Corryn Faciane | Bobby Sox | 41.88 | 41.88 |

| RIDER | HORSE | SCORE |
|-------|-------|-------|
|-------|-------|-------|

## PRIX CAPRILLI INTRO 1

|               |                   |         |
|---------------|-------------------|---------|
| Megan Cato    | New Town Rex      | 72.700% |
| Ann Byerley   | Snickers          | 72.200% |
| Sydney Ragas  | Lil' Bit O' Color | 72.200% |
| Logan Barowka | Brighton My Life  | 66.100% |
| Sarah Truett  | Red               | 64.400% |

## PRIX CAPRILLI INTRO 2

|                |                   |         |
|----------------|-------------------|---------|
| Sydney Ragas   | Lil' Bit O' Color | 73.300% |
| Megan Cato     | New Town Rex      | 71.400% |
| Ann Byerley    | Snickers          | 70.400% |
| Corryn Faciane | Bobby Sox         | 69.000% |
| Logan Barowka  | Brighton My Life  | 68.800% |
| Sarah Truett   | Red               | 66.600% |

## INTRO TEST A

|                  |                  |        |
|------------------|------------------|--------|
| Logan Barowka    | Angel            | 67.50% |
| Corryn Faciane   | Bobby Sox        | 60.62% |
| Sarah Truett     | Red              | 60.00% |
| Lily Miller      | Kiwi             | 57.50% |
| Samantha Schultz | Chocolate Eclair | 56.25% |

## INTRO TEST B

|                  |                            |        |
|------------------|----------------------------|--------|
| Sydney Ragas     | Lil' Bit O' Color          | 72.50% |
| Lily Miller      | Kiwi                       | 65.00% |
| Logan Barowka    | Angel                      | 65.00% |
| Alex Varisco     | Abbylieux Maid of Diamonds | 64.37% |
| Samantha Schultz | Chocolate Eclair           | 58.75% |
| Sarah Truett     | Red                        | 55.00% |

| RIDER | HORSE | SCORE |
|-------|-------|-------|
|-------|-------|-------|

## INTRO TEST C

|              |                            |        |
|--------------|----------------------------|--------|
| Alex Varisco | Abbylieux Maid of Diamonds | 66.50% |
|--------------|----------------------------|--------|

## TRAINING LEVEL TEST 2

|             |            |        |
|-------------|------------|--------|
| Rachel Dell | Rain Dance | 62.50% |
|-------------|------------|--------|

## TRAINING LEVEL TEST 3

|             |            |        |
|-------------|------------|--------|
| Rachel Dell | Rain Dance | 60.40% |
|-------------|------------|--------|

## FIRST LEVEL TEST 1

|               |               |        |
|---------------|---------------|--------|
| Kalie Beckers | Luminous Lady | 62.58% |
|---------------|---------------|--------|

## FIRST LEVEL FREESTYLE

|               |               |        |
|---------------|---------------|--------|
| Kalie Beckers | Luminous Lady | 65.00% |
|---------------|---------------|--------|

## PRIX ST GEORGES

|                   |              |        |
|-------------------|--------------|--------|
| Cameron Dauterive | Don Giovanni | 60.00% |
|-------------------|--------------|--------|

## DRESSAGE ONLY TESTS

## USEA NOVICE

|              |        |         |
|--------------|--------|---------|
| Alex Varisco | Vinnie | 68.260% |
|--------------|--------|---------|

## DRESSAGE EQUITATION CLASSES

### EQUITATION A (WALK/TROT)

|                   |             |
|-------------------|-------------|
| Julia Scheuermann | Crown Jewel |
|-------------------|-------------|

### EQUITATION B (WALK/TROT/CANTER)

|                |                            |
|----------------|----------------------------|
| Alex Varisco   | Abbylieux Maid of Diamonds |
| Jaide Guillory | Crown Jewel                |
| Alexis Laguna  | Zutch                      |

### DODDLEBUG CLASS

|                 |                    |
|-----------------|--------------------|
| Cali Cefalu     | Erysti             |
| Grey Cummins    | Appy Go Lucky      |
| Maddie Mazzetti | Snickers Satisfies |
| Kylie Reitzell  | Erysti             |



Alex Daray and Beach Boy at the Juniors Show.

PHOTO COURTESY OF TED WHITE

# The Adventure of a Lifetime

By Christy Sanantonio



PHOTO COURTESY OF HEATHER BLITZ

This past January, I had the unique opportunity to train for a week in sunny Wellington, Florida, that was made possible by Carol Lavell and The Dressage Foundation selecting me as the 2011 Region 9 recipient of the Gifted Scholarship. Grenadier, my 11 year-old Danish Warmblood gelding, and I had been on the brink of entering the FEI levels and needed the proper guidance to get there. My goals during the week of training included improving my biomechanics,

levels and teaches a clear system of training that is easy to understand for riders of all levels. She has had the good fortune to be able to combine natural talent and competitive drive with the learning of biomechanical skills, and is one of the first in a new generation of dressage riders. Her sessions include easy-to-understand theories about riding, focusing on rider biomechanics and effectiveness of the aids.

Heather has been shining brightly

effect of the aids, and overall rideability that is essential for the upper levels.

When making my selection with whom to train, I could think of no better trainer and rider combination than Heather Blitz. She is an international Grand Prix rider who had been based in Europe for the past few years and now resides in Wellington, Florida. She is also a popular and successful clinician with her 'Mind Your Riding' Tour which focuses on the effect of the rider's body and aids on the horse at all

in the spotlight with her phenomenal mount Paragon, an 8-year old Danish Warmblood gelding that has proven to be one of the greatest horses of our generation. Consistently putting up scores in the mid-70s in the Intermediaire I and Prix St. Georges, this pair stands out above the competition (and 18 hands high, might I add). They will no doubt be a serious contender for the London 2012 Olympic Team.

At 4 a.m. on a chilly Wednesday morning, Grenadier and I departed Louisiana and began the 13-hour journey to Wellington. Because of my job, I never had the opportunity to season in the fantasy horse land people raved about, known to many as "Wellie World". As the miles passed, I began to mentally prepare for my training with Heather and knew this was by far going to be the adventure of a lifetime. By sunset that evening, we arrived at Heather's cozy training facility. Upon arrival, we were warmly greeted and immediately felt right at home.

For the next five days, I was floating on Cloud 9. Each morning, I would begin my day by watching Heather ride Paragon. Their workouts together were in perfect harmony and seemed effortless, with the powerful Paragon looking as though he was light as a feather and more graceful than any ballerina you've ever seen. It is definitely a sight to behold. Every time I watched this pair in action, it took my breath away.

After my daily inspiration, it was time for my lesson. I had ridden in clinics with Heather before, so she

was familiar with my riding and my horse. Our first lesson together began with a rideability check: could Grenadier stop and go, and follow my aids when going left and right? This concept may sound elementary, but is a fundamental that Heather insists is a solution to many common training issues. My tempi changes had not been of consistent quality prior to my training with Heather in Florida, and instead of immediately working on the changes, we focused on rideability. Once this groundwork was established and the lines of communication between Grenadier and I were clear, we began to tackle other issues that needed attention, such as my biomechanics as a rider.

Heather is one of the few clinicians in the world that addresses this concept at all and to the intricate degree that

she explains it. Contrary to popular belief, the successful rider is not just merely sitting pretty on the horse, but rather is an athlete that is utilizing her core muscles and strength in a way that many riders cannot access.

Heather encouraged me to really 'bear down' (making a firm wall with your abdominal and back muscles and pushing your guts against that) in order to keep my center of gravity low in addition to closing the angle of my hip (especially in canter) and keeping more pressure through my thighs on the saddle. There was such a difference in the feeling through Grenadier's back and his balance (or his 'medicine ball' as Heather describes it) once I made these two small, but significant, changes in myself. Heather was quite pleased with our progress for the first lesson and I could hardly wait to see

what was in store for us for the next four days of my training.

Day two of my training began very similar to my first lesson, beginning with a rideability check with Grenadier, who was much more attentive and eager to learn than the previous day. Since he was in a much better place, Heather worked with us in collected canter, then into quarter pirouettes and eventually full pirouettes, which have not always been our strongest point. She instructed me to keep even weight in my reins and to slightly open my inside hand to allow Grenadier to follow my rein around throughout the duration of the pirouette and to keep my seat bones even and quiet. Once we had gained confidence through the quarter and half pirouettes, we attempted a full canter pirouette.

*Continued on page 13*

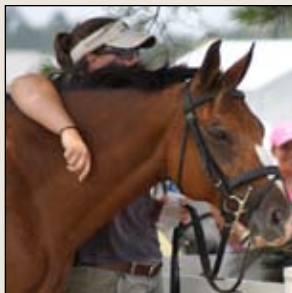


The difference between capturing the moments...  
and taking pictures.

**REE**  
MARIE COBB  
P H O T O G R A P H Y

**BOOK YOUR PORTRAIT SESSION NOW!  
10% DISCOUNT WITH THIS AD!**

ree@reephotographics.com | www.reephotographics.com | 337 945 1410



### SEDA Eventing

#### Award Chair:

Kimberly Schultz  
18648 Hwy 40  
Covington, LA 70435  
(985) 259-2580  
kabschultz@att.net

### Volunteer Hours Chair:

Carmen Hall  
121 Bennett Drive  
Covington, LA 70435

### How do members participate in the SEDA Awards Program?

- Eventing scores must be mailed to the Eventing Chair within 14 days after the last day on which the horse trial/combined test was held. Use the form on page 26 to submit your scores.
- Check your standings and volunteer hours on the web site and with each issue. Report any discrepancies to the appropriate chair.

[www.sedariders.org](http://www.sedariders.org)

# Eventing Standings

As of June 24, 2011

## \*\*RECOGNIZED EVENTING\*\*

### PRELIMINARY - SR

| RIDER        | HORSE                 | # SHOWS | POINTS |
|--------------|-----------------------|---------|--------|
| Emily Embree | Crescent City Classic | 2       | 6      |

### TRAINING - SR

| RIDER          | HORSE                   | # SHOWS | POINTS |
|----------------|-------------------------|---------|--------|
| Emily Embree   | Crescent City Classic   | 2       | 14     |
| Craig Peterson | Sportsfield Ryan        | 3       | 13     |
| Ted White      | Loughnatausa Brown Bear | 1       | 3      |

### TRAINING - JR

| RIDER           | HORSE          | # SHOWS | POINTS |
|-----------------|----------------|---------|--------|
| Madeline Mosing | Chesapeake Bay | 1       | 3      |

### NOVICE - SR

| RIDER          | HORSE            | # SHOWS | POINTS |
|----------------|------------------|---------|--------|
| Emily Embree   | Buttercream      | 4       | 20     |
| Craig Peterson | Sportsfield Ryan | 1       | 4      |

### NOVICE - JR

| RIDER           | HORSE   | # SHOWS | POINTS |
|-----------------|---------|---------|--------|
| Madeline Mosing | Moet II | 1       | 4      |

### BEGINNER NOVICE - JR

| RIDER             | HORSE        | # SHOWS | POINTS |
|-------------------|--------------|---------|--------|
| Izzy Hemb         | Walter       | 1       | 11     |
| Claudia Hemb      | Ricky        | 1       | 4      |
| Emma Stolzenhaler | Kilkee Riani | 1       | 4      |
| Alex Daray        | Beach Boy    | 1       | 3      |
| Natalie Pethke    | Handyman     | 1       | 3      |

### BEGINNER NOVICE - SR

| RIDER        | HORSE           | # SHOWS | POINTS |
|--------------|-----------------|---------|--------|
| Julie Stagg  | Class Charmer   | 2       | 17     |
| Chrissy West | Auto Be A Storm | 2       | 15     |

## \*\*SCHOOLING COMBINED TESTS\*\*

### PRELIMINARY - SR

| RIDER        | HORSE                 | # SHOWS | POINTS |
|--------------|-----------------------|---------|--------|
| Emily Embree | Crescent City Classic | 2       | 14     |

### TRAINING - SR

| RIDER          | HORSE                   | # SHOWS | POINTS |
|----------------|-------------------------|---------|--------|
| Ted White      | Loughnatausa Brown Bear | 1       | 7      |
| Ginny Harrison | The Illusionist         | 1       | 5      |
| Craig Peterson | Sportsfield Ryan        | 2       | 4      |
| Emily Embree   | Crescent City Classic   | 1       | 0      |

### TRAINING - JR

| RIDER         | HORSE        | # SHOWS | POINTS |
|---------------|--------------|---------|--------|
| Alex Daray    | Beach Boy    | 1       | 7      |
| Jacob Roberts | Sharpshooter | 1       | 2      |

### NOVICE - JR

| RIDER        | HORSE      | # SHOWS | POINTS |
|--------------|------------|---------|--------|
| Rachel Dell  | Rain Dance | 2       | 7      |
| Alex Varisco | Vinnie     | 1       | 0      |

### NOVICE - SR

| RIDER          | HORSE          | # SHOWS | POINTS |
|----------------|----------------|---------|--------|
| Emily Embree   | Buttercream    | 3       | 12     |
| Craig Peterson | The Countryman | 1       | 5      |
| Laura Hughes   | The Countryman | 1       | 0      |

### BEGINNER NOVICE - SR

| RIDER          | HORSE           | # SHOWS | POINTS |
|----------------|-----------------|---------|--------|
| Sally Richards | Rocky Raccoon   | 1       | 7      |
| Chrissy West   | Auto Be A Storm | 2       | 7      |

### BEGINNER NOVICE - JR

| RIDER             | HORSE                   | # SHOWS | POINTS |
|-------------------|-------------------------|---------|--------|
| Kalie Beckers     | Traveler                | 2       | 14     |
| Cameron Dauterine | GF WindChime            | 2       | 9      |
| Kalie Beckers     | Little Miss Independent | 1       | 5      |
| Alex Daray        | Beach Boy               | 1       | 3      |
| Grace Bellone     | Wellington              | 1       | 1      |
| Claudia Hemb      | Ricky                   | 1       | 2      |

### TADPOLE - SR

| RIDER         | HORSE            | # SHOWS | POINTS |
|---------------|------------------|---------|--------|
| Ruth Roca     | Bella the Great  | 2       | 14     |
| Ashley Murray | Starflight Amira | 1       | 5      |

## RIDER HORSE # SHOWS POINTS

### TADPOLE - JR

| RIDER             | HORSE        | # SHOWS | POINTS |
|-------------------|--------------|---------|--------|
| Megan Cato        | New Town Rex | 2       | 11     |
| Stevie Lynn Roth  | Snickers     | 2       | 14     |
| Kelsey Hargrove   | Lily         | 1       | 5      |
| Jaide Guillory    | Crown Jewel  | 1       | 5      |
| Julia Scheuermann | Buttercream  | 1       | 0      |

### POLLYWOG - JR

| RIDER             | HORSE                      | # SHOWS | POINTS |
|-------------------|----------------------------|---------|--------|
| Alex Varisco      | Abbeyleux Maid of Diamonds | 3       | 12     |
| Alexis Laguna     | Zutch                      | 2       | 10     |
| Sydney Schultz    | Snickers Satisfies         | 2       | 9      |
| Kalie Beckers     | Luminous Lady              | 1       | 7      |
| Juliette James    | Romeo                      | 1       | 4      |
| Rebecca Rhode     | Luna                       | 1       | 4      |
| Cameron Dauterive | Beanie                     | 1       | 3      |

### AMOEBIA - SR

| RIDER       | HORSE | # SHOWS | POINTS |
|-------------|-------|---------|--------|
| Kym Marullo | Talix | 2       | 14     |

### AMOEBIA - JR

| RIDER              | HORSE              | # SHOWS | POINTS |
|--------------------|--------------------|---------|--------|
| Sydney Ragas       | Lil Bit O Color    | 2       | 14     |
| Julia Scheuermann  | Crown Jewel        | 1       | 5      |
| Svenya Stoyanoff   | Snickers Satisfies | 1       | 4      |
| Svenya Stoyanoff   | Handyman           | 1       | 4      |
| Victoria Schnauder | Montana Gold       | 1       | 3      |

### PRE-AMOEBIA - JR

| RIDER             | HORSE             | # SHOWS | POINTS |
|-------------------|-------------------|---------|--------|
| Ann Byerley       | Snickers          | 2       | 12     |
| Sydney Ragas      | Lil' Bit O' Color | 2       | 7      |
| Christian Maloney | Appy Go Lucky     | 1       | 7      |

## \*\*SCHOOLING HORSE TRIALS\*\*

### GREEN AS GRASS - JR

| RIDER          | HORSE              | # SHOWS | POINTS |
|----------------|--------------------|---------|--------|
| Sydney Schultz | Snickers Satisfies | 1       | 4      |
| Olivia Pethke  | Hanky Panky        | 1       | 0      |
| Rebecca Rhode  | Luna               | 1       | 0      |

### GREEN AS GRASS - SR

| RIDER               | HORSE          | # SHOWS | POINTS |
|---------------------|----------------|---------|--------|
| Lynn Quast          | Worth the Wait | 1       | 7      |
| Ginny Harrison      | Photogenic     | 1       | 5      |
| Lisette Constantine | Handy Man      | 1       | 4      |

### BEGINNER NOVICE - JR

| RIDER        | HORSE       | # SHOWS | POINTS |
|--------------|-------------|---------|--------|
| Simone Page  | Nilla Wafer | 1       | 7      |
| Izzy Hemb    | Walter      | 1       | 5      |
| Alex Daray   | Beach Boy   | 1       | 4      |
| Claudia Hemb | Ricky       | 1       | 3      |
| Eva Hemb     | Piper       | 1       | 2      |

### BEGINNER NOVICE - SR

| RIDER          | HORSE           | # SHOWS | POINTS |
|----------------|-----------------|---------|--------|
| Sally Richards | Rocky Raccoon   | 1       | 5      |
| Chrissy West   | Auto Be A Storm | 1       | 4      |
| Julie Stagg    | Class Charme    | 1       | 0      |

### NOVICE - JR

| RIDER         | HORSE   | # SHOWS | POINTS |
|---------------|---------|---------|--------|
| Jacob Roberts | Maximus | 1       | 7      |



Rebecca Rhode on Luna at the JR Show.

PHOTO COURTESY OF NICOLE LANDRENEAU

# Schooling Dressage Standings

As of June 14, 2011

| RIDER                                 | HORSE                      | TESTS/JUDGES | SCORE  |
|---------------------------------------|----------------------------|--------------|--------|
| <b>INTRO LEVEL - AA</b>               |                            |              |        |
| Kym Marullo                           | Talix                      | 7/4          | 61.654 |
| Ruth Roca                             | Bella the Great            | 1/1          | 60.000 |
| <b>INTRO LEVEL - JR/YR</b>            |                            |              |        |
| Alex Varisco                          | Abbeyleux Maid of Diamonds | 1/1          | 63.900 |
| Sydney Ragas                          | Little Bit O'Color         | 1/1          | 67.991 |
| Sarah Truett                          | Red                        | 2/1          | 62.343 |
| <b>PRIX CAPRILLI INTRO LEVEL - JR</b> |                            |              |        |
| Sydney Ragas                          | Lil Bit of Color           | 1/1          | 70.000 |
| <b>PRIX CAPRILLI INTRO LEVEL - SR</b> |                            |              |        |
| Kym Marullo                           | Talix                      | 4/2          | 66.746 |
| <b>TRAINING LEVEL - AA</b>            |                            |              |        |
| Teri O'Neal                           | Ferdinand                  | 2/1          | 63.691 |
| Connie Henry                          | Red Hot Investment         | 3/1          | 66.657 |
| Sheri Kitchens                        | Koss                       | 6/2          | 54.371 |
| <b>TRAINING LEVEL - JR/YR</b>         |                            |              |        |
| Camille Coleman                       | Stoney                     | 1/1          | 65.600 |
| Alice Shepard                         | Dora                       | 2/1          | 62.947 |
| <b>TRAINING LEVEL - O</b>             |                            |              |        |
| Anne Hornbeak                         | Eykaterina                 | 1/1          | 64.000 |
| Sophia Wijnbergen                     | Romeo                      | 2/1          | 59.554 |
| Sophia Wijnbergen                     | Glinta                     | 1/1          | 57.857 |
| <b>FIRST LEVEL - JR/YR</b>            |                            |              |        |
| Kalie Beckers                         | Traveler                   | 2/1          | 70.000 |
| <b>FIRST LEVEL - AA</b>               |                            |              |        |
| Elaine Mendel-John                    | Triple S Blackwood Image   | 3/2          | 67.639 |
| Rebecca Doleac                        | Bella Octavia              | 2/1          | 68.994 |
| Laura Vandervliet                     | Isaac                      | 1/1          | 61.935 |
| <b>FIRST LEVEL - O</b>                |                            |              |        |
| Anne Hornbeak                         | Eykaterina                 | 1/1          | 66.207 |
| <b>SECOND LEVEL - JR/YR</b>           |                            |              |        |
| Camille Coleman                       | Walter                     | 1/1          | 58.285 |
| <b>SECOND LEVEL - AA</b>              |                            |              |        |
| Louise White                          | Cold Snap                  | 1/1          | 63.095 |
| Laura Vandervliet                     | Isaac                      | 1/1          | 62.285 |

| RIDER                            | HORSE           | TESTS/JUDGES | SCORE  |
|----------------------------------|-----------------|--------------|--------|
| <b>THIRD LEVEL - AA</b>          |                 |              |        |
| Elaine Harmon                    | Lincoln         | 1/1          | 62.308 |
| Louise White                     | Cold Snap       | 1/1          | 61.579 |
| <b>THIRD LEVEL - O</b>           |                 |              |        |
| Anne Hornbeak                    | Dannah          | 1/1          | 66.842 |
| <b>FOURTH LEVEL - JR/YR</b>      |                 |              |        |
| Cameron Dauterive                | Don Giovanni    | 3/3          | 60.631 |
| <b>FOURTH LEVEL - AA</b>         |                 |              |        |
| Allison Barca                    | Risque          | 1/1          | 68.857 |
| <b>FOURTH LEVEL - O</b>          |                 |              |        |
| Anne Hornbeak                    | Dannah          | 1/1          | 69.428 |
| <b>PRIX ST GEORGES - JR/YR</b>   |                 |              |        |
| Cameron Dauterive                | Don Giovanni    | 1/1          | 58.421 |
| <b>PRIX ST GEORGES - O</b>       |                 |              |        |
| Leslie Morris                    | Meant to Be     | 2/2          | 64.868 |
| <b>INTERMEDIARE I - AA</b>       |                 |              |        |
| Allison Barca                    | Roux            | 1/1          | 62.632 |
| <b>INTERMEDIARE I - O</b>        |                 |              |        |
| Sophia Wijnbergen-Lusthuis       | Zhivago         | 1/1          | 63.158 |
| <b>USEA BEGINNER NOVICE - JR</b> |                 |              |        |
| Emma Stolzen Laler               | Kilkani Riani   | 2/1          | 64.655 |
| Grace Bellone                    | Wellington      | 2/1          | 61.381 |
| <b>USEA NOVICE - JR</b>          |                 |              |        |
| Madeline Mosing                  | Chesapeake Bay  | 1/1          | 73.478 |
| <b>USEA TRAINING LEVEL - SR</b>  |                 |              |        |
| Ginny Harrison                   | The Illusionist | 2/1          | 67.273 |
| Rebecca Doleac                   | Bella Octavia   | 2/1          | 64.088 |
| <b>USEA TRAINING LEVEL - JR</b>  |                 |              |        |
| Madeline Mosing                  | Chesapeake Bay  | 1/1          | 65.909 |
| <b>USEA INTERMEDIATE - SR</b>    |                 |              |        |
| Laura Vandervliet                | Mighty Mangaroo | 2/1          | 67.000 |
| Laura Vandervliet                | King Billy      | 2/1          | 69.000 |



**SEDA Schooling Dressage Award Chair:**  
 Deborah Epperson  
 P.O. Box 808  
 Folsom, LA 70437  
 (985) 705-3644  
 deborah.epperson@hotmail.com

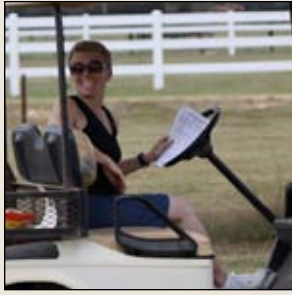
**Volunteer Hours Chair:**  
 Carmen Hall  
 121 Bennett Drive  
 Covington, LA 70435

**How do members participate in the SEDA Awards Program?**

- 1 Make copies of the front of your dressage test results making sure score, date, and judge's name are legible.
- 2 Mail copies to the Schooling Dressage Chair no later than 14 days after the last day of the weekend on which the show in question was held. Include a valid e-mail address.
- 3 Check your standings and volunteer hours on the web site and with each issue. Report any discrepancies to the appropriate chair.

[www.sedariders.org](http://www.sedariders.org)





**SEDA Recognized Dressage Award Chair:**  
Sally Richards  
75171 Old Military Rd.  
Covington, LA 70435  
(985) 809-7391  
gridweek@bellsouth.net

**Volunteer Hours Chair:**  
Carmen Hall  
121 Bennett Drive  
Covington, LA 70435

**How do members participate in the SEDA Awards Program?**

- 1 Make copies of the front of your recognized dressage test results making sure score, date, and judge's name are legible.
- 2 Mail copies to Sally no later than 14 days after the last day of the weekend on which the show in question was held. Include a valid e-mail address.
- 3 Check your standings and volunteer hours on the web site and with each issue. Report any discrepancies to the appropriate chair.

[www.sedariders.org](http://www.sedariders.org)



Richard Freeman, Jr receiving the Denise Arroyo Memorial Award at DAL. The award is given to the owner of the highest-scoring horse ridden by someone other than the owner. Riga was ridden by Regina Milliken (far right).



PHOTOS: TREE PHOTOGRAPHS

# Recognized Dressage Standings

As of June 24, 2011

| RIDER                         | HORSE                    | TESTS/JUDGES | SCORE  |
|-------------------------------|--------------------------|--------------|--------|
| <b>INTRO LEVEL - JR/YR</b>    |                          |              |        |
| Logan Barowka                 | Angel                    | 2/1          | 66.563 |
| <b>TRAINING LEVEL - JR/YR</b> |                          |              |        |
| Kalie Beckers                 | Bienvenu ZSH             | 5/3          | 70.800 |
| Kalie Beckers                 | Luminous Lady            | 5/3          | 67.980 |
| Alex Varisco                  | Lavalais                 | 4/3          | 64.400 |
| <b>TRAINING LEVEL - AA</b>    |                          |              |        |
| Bernadette Murray-Fertel      | WEC Golden Dancer 17     | 5/3          | 68.692 |
| Mary Alice Edwards            | Fortoula                 | 7/4          | 68.412 |
| Jamie Barowka                 | Angel                    | 6/3          | 62.441 |
| Gerlinde Beckers              | Bienvenu ZSH             | 1/1          | 63.400 |
| <b>TRAINING LEVEL - O</b>     |                          |              |        |
| Regina Miliken                | Riga                     | 4/3          | 77.378 |
| Susan Sams                    | Liberty                  | 6/3          | 68.491 |
| Anne Hornbeak                 | Eykaterina               | 8/5          | 68.489 |
| Bruce Eglesfield              | Lucie                    | 4/2          | 67.970 |
| Nancy Burba                   | Watusi                   | 8/3          | 67.481 |
| Elizabeth Cummins             | Vinnie                   | 4/3          | 64.400 |
| <b>FIRST LEVEL - JR/YR</b>    |                          |              |        |
| Mattie Zepernick              | Nereide                  | 3/3          | 65.863 |
| Mattie Zepernick              | Amarula                  | 12/8         | 66.232 |
| Alex Varisco                  | Lavalais                 | 4/3          | 63.554 |
| Kalie Beckers                 | Bienvenu ZSH             | 3/3          | 67.375 |
| Kalie Beckers                 | Luminous Lady            | 2/2          | 67.097 |
| <b>FIRST LEVEL - AA</b>       |                          |              |        |
| Gerlinde Beckers              | Bienvenu ZSH             | 1/1          | 68.966 |
| Ted White                     | Loughnatousa Brown Bear  | 3/1          | 63.956 |
| Elaine Mendel-John            | Triple S Blackwood Image | 7/4          | 63.415 |
| Stacy Ferraro                 | Dominik                  | 4/3          | 62.291 |
| Mary Alice Edwards            | Fortoula                 | 3/2          | 68.375 |
| <b>FIRST LEVEL - O</b>        |                          |              |        |
| Regina Miliken                | Carlos                   | 4/3          | 73.557 |
| Elizabeth Cummins             | Vinnie                   | 3/2          | 64.080 |
| Nancy Burba                   | G Force                  | 4/3          | 61.657 |
| Nancy Burba                   | Watusi                   | 1/1          | 60.345 |
| <b>SECOND LEVEL - JR/YR</b>   |                          |              |        |
| Mattie Zepernick              | Nereide                  | 9/5          | 65.107 |
| Mattie Zepernick              | Amarula                  | 3/2          | 63.146 |

| RIDER                          | HORSE        | TESTS/JUDGES | SCORE  |
|--------------------------------|--------------|--------------|--------|
| <b>SECOND LEVEL - AA</b>       |              |              |        |
| Lolly White                    | Cold Snap    | 5/4          | 62.191 |
| <b>SECOND LEVEL - O</b>        |              |              |        |
| Anne Hornbeak                  | Pacifica     | 2/2          | 65.834 |
| Nancy Burba                    | G Force      | 4/3          | 59.500 |
| Bruce Eglesfield               | Debonaire    | 2/2          | 66.000 |
| <b>THIRD LEVEL - AA</b>        |              |              |        |
| Allison Barca                  | Risque       | 3/2          | 64.957 |
| Elaine Harmon                  | Lincoln      | 4/3          | 61.164 |
| Lolly White                    | Cold Snap    | 4/3          | 58.092 |
| <b>THIRD LEVEL - O</b>         |              |              |        |
| Anne Hornbeak                  | Hello Dolly  | 3/4          | 65.994 |
| Bruce Eglesfield               | Debonaire    | 1/1          | 62.895 |
| <b>FOURTH LEVEL - JR/YR</b>    |              |              |        |
| Cameron Dauterive              | Don Giovanni | 3/2          | 62.429 |
| <b>FOURTH LEVEL - AA</b>       |              |              |        |
| Allison Barca                  | Risque       | 3/2          | 61.524 |
| <b>FOURTH LEVEL - O</b>        |              |              |        |
| Anne Hornbeak                  | Hello Dolly  | 2/2          | 69.286 |
| Anne Hornbeak                  | Dannah       | 4/3          | 65.277 |
| <b>PRIX ST GEORGES - JR/YR</b> |              |              |        |
| Cameron Dauterive              | Don Giovanni | 7/5          | 59.962 |
| <b>PRIX ST GEORGES - O</b>     |              |              |        |
| Sophia Wijnbergen-Lusthuis     | TravelTimes  | 2/2          | 63.685 |
| Leslie Morris                  | Meant To Be  | 1/1          | 58.947 |
| Anne Hornbeak                  | Battle       | 1/1          | 66.316 |
| <b>INTERMEDIARE I - AA</b>     |              |              |        |
| Allison Barca                  | Roux         | 2/2          | 57.763 |
| <b>INTERMEDIARE I - O</b>      |              |              |        |
| Anne Hornbeak                  | Battle       | 1/1          | 65.000 |
| <b>GRAND PRIX - AA</b>         |              |              |        |
| Debbie Gordon                  | Ricotta      | 2/2          | 59.894 |

*Congratulations to Grace Bellone, winner of the spring SEDA Scholarship for Junior Riders!*

Keeping my contact steady and allowing a slight bend to the inside with my rein open allowed Grenadier to keep his 'medicine ball' back, utilize his hind end, and properly complete the movement. Although more of Grenadier's strength needs to be developed to make the pirouettes rock solid, both Heather and I were excited to see the potential.

For the remaining three days, we built on progress from the previous days' training by adding in work with piaffe. Grenadier had always been good in piaffe, but had never been successful with passage. That was until the fifth and final day of my training with Heather.

From piaffe, she asked me to think of all of my forces moving forward while asking Grenadier to step forward and move into the contact.

I had never felt passage before in my life until that moment when I saw in the mirror my horse move in a way I had never seen him move before: he had just taken his very first steps of passage! As this result was desired but not very expected, Heather and I were ecstatic with the effort. We attempted passage from piaffe again and got three resulting passage steps. Grenadier was showered with praise and after our lesson, Heather joined me on a gorgeous hack through the 50 miles of trails around Wellington. It was certainly a monumental day in our training that will not soon be forgotten.

It seemed like I had just arrived when my training with Heather was over. (Time flies when you are having fun!) During the long trek home, I reflected on my amazing lessons with

Heather. I found it very beneficial at the end of each day to journal about all that I learned that day during my lessons, from her magnificent rides on Paragon, or by watching her teach other students. She is such an amazing riding educator! As I traveled home, I realized I had never felt more encouraged or inspired about riding in my life. I desire to one day spend the season in Wellington to experience that amazing horse fantasy land once again. Grenadier and I are looking forward to a fun and successful show season this year.

I am so grateful to Heather Blitz for her time and energies to train me and also to Carol Lavell and The Dressage Foundation for selecting me as a recipient of this scholarship which continues to recognize adult amateurs in our brilliant sport of Dressage. ♣



## Breeding Danish Horses for Sport

*Intensely researched. Exclusively bred.  
Proudly yours?*

Located in North Central Louisiana, Honey Breeze Farm selectively breeds a limited number of outstanding foals each year.

Contact us today for your opportunity to be part of an exclusive club: the owner of a Honey Breeze Farm sporthorse!



**Honey  
Breeze  
Farm**

1570 Brownlee Road • Calhoun, LA 71225  
318.396.2636 • 318.547.5993  
[www.HoneyBreezeFarm.com](http://www.HoneyBreezeFarm.com)



Legato - Blue Hors Leredo x Eternity; 1yo DWB gelding



Avatar - Willemoes x Avellina; 2008 now under saddle



Donna Lita - Don Schultro x Eternity; 2yo DWB filly

# May Dressage Across the Lake Results

| RIDER                                                   | HORSE                    | SCORE   |
|---------------------------------------------------------|--------------------------|---------|
| <b>USEF TRAINING LEVEL TEST 1</b>                       |                          |         |
| Julie Breland                                           | Not An Issue             | 54.583% |
| Elizabeth Richards                                      | Artistic Inspiration     | 51.667% |
| Kalie Beckers                                           | Luminous Lady            | 65.833% |
| Jodie Stevens Kelly                                     | Ciësto-Strona            | 70.833% |
| <b>USEF TRAINING LEVEL TEST 2</b>                       |                          |         |
| Elizabeth Richards                                      | Artistic Inspiration     | 58.214% |
| Isabel Franklin                                         | Posner                   | 66.071% |
| Kaley Breland                                           | Scooby Doo               | 64.286% |
| Jodie Stevens Kelly                                     | Broadway                 | 75.357% |
| Regina Milliken                                         | Riga                     | 73.571% |
| Anne Hornbeak                                           | Eykaterina               | 65.357% |
| <b>USEF TRAINING LEVEL TEST 3 &amp; GAIG/USDF QUAL.</b> |                          |         |
| Julie Breland                                           | Not An Issue             | 64.400% |
| Kalie Beckers                                           | Bienvu ZSH               | 67.200% |
| Jordan Fraser                                           | Uroliet                  | 66.800% |
| Frances Helene Hollis                                   | Bullet                   | 59.600% |
| Regina Milliken                                         | Riga                     | 76.800% |
| Jodie Stevens Kelly                                     | Broadway                 | 75.200% |
| Jodie Stevens Kelly                                     | Ciësto-Strona            | 74.800% |
| Anne Hornbeak                                           | Eykaterina               | 70.000% |
| Bruce Eglesfield                                        | Lucie                    | 69.200% |
| Nancy Burba                                             | Watusi                   | 68.800% |
| Sophia Wijnbergen-Lusthuis                              | Marigny                  | 65.600% |
| <b>USEF FIRST LEVEL TEST 1</b>                          |                          |         |
| Mary Alice Edwards                                      | Fortoula                 | 67.931% |
| Robyn Taliaferro                                        | Glenormiston Billies Bay | 52.414% |
| Jordan Fraser                                           | Uroliet                  | 66.207% |
| Kalie Beckers                                           | Bienvu ZSH               | 61.724% |
| Nancy Burba                                             | Watusi                   | 60.345% |
| Bruce Eglesfield                                        | Lucie                    | 60.000% |
| <b>USEF FIRST LEVEL TEST 2</b>                          |                          |         |
| Mary Alice Edwards                                      | Fortoula                 | 67.838% |
| Elaine Mendel-John                                      | Triple S Blackwood Image | 60.270% |

| RIDER                                                         | HORSE                    | SCORE   |
|---------------------------------------------------------------|--------------------------|---------|
| Mimi Peters                                                   | Moet                     | 64.324% |
| <b>USEF FIRST LEVEL TEST 3 &amp; GAIG/USDF QUAL.</b>          |                          |         |
| Robyn Taliaferro                                              | Glenormiston Billies Bay | 54.839% |
| Mattie Zepernick                                              | Amarula                  | 62.581% |
| Kalie Beckers                                                 | Luminous Lady            | 60.000% |
| Kaley Breland                                                 | Scooby Doo               | 53.871% |
| Jodie Stevens Kelly                                           | Stanley Holister         | 67.742% |
| Mimi Peters                                                   | Moet                     | 65.484% |
| <b>USEF SECOND LEVEL TEST 1</b>                               |                          |         |
| Mattie Zepernick                                              | Amarula                  | 60.000% |
| Bruce Eglesfield                                              | Debonaire                | 63.429% |
| <b>USEF SECOND LEVEL TEST 2</b>                               |                          |         |
| Mattie Zepernick                                              | Nereide                  | 61.579% |
| <b>USEF SECOND LEVEL TEST 3 &amp; GAIG/USDF QUAL.</b>         |                          |         |
| Louise V. White                                               | Cold Snap                | 65.000% |
| Mattie Zepernick                                              | Nereide                  | 63.571% |
| <b>USEF THIRD LEVEL TEST 1</b>                                |                          |         |
| Elaine Harmon                                                 | Lincoln                  | 59.474% |
| Louise V. White                                               | Cold Snap                | 57.105% |
| Kathryn Chabaud                                               | Zydeco ZSH               | 54.211% |
| Lyndon Rife                                                   | Jago                     | 67.105% |
| Bruce Eglesfield                                              | Debonaire                | 62.895% |
| <b>USEF THIRD LEVEL TEST 3 GAIG/USDF QUAL.</b>                |                          |         |
| Bonnie Canter                                                 | Brindabah's Ruben Heizen | 63.333% |
| Elaine Harmon                                                 | Lincoln                  | 57.949% |
| Kathryn Chabaud                                               | Zydeco ZSH               | 54.615% |
| Lyndon Rife                                                   | Jago                     | 64.359% |
| Vicky Busch                                                   | Gabriella                | 56.410% |
| <b>USEF FOURTH LEVEL TEST 1</b>                               |                          |         |
| Bonnie Canter                                                 | Brindabah's Ruben Heizen | 59.714% |
| Anne Hornbeak                                                 | Dannah                   | 63.143% |
| Lyndon Rife                                                   | Rembrandt                | 61.429% |
| Lyndon Rife                                                   | Rembrandt                | 65.405% |
| <b>USEF FOURTH LEVEL TEST 3 GAIG/USDF QUAL.</b>               |                          |         |
| Anne Hornbeak                                                 | Dannah                   | 64.250% |
| <b>FEI TEST OF CHOICE &amp; GAIG/USDF QUAL.</b>               |                          |         |
| Allison Barca                                                 | Roux                     | 58.947% |
| Christy Sanantonio                                            | Grenadier                | 55.789% |
| Cameron Dauterive                                             | Don Giovanni             | 61.316% |
| Jodie Stevens Kelly                                           | Manhattan                | 67.447% |
| Anne Hornbeak                                                 | Battle                   | 66.316% |
| Leslie Morris                                                 | Meant To Be              | 56.053% |
| <b>FEI INTERMEDIARE I OPEN</b>                                |                          |         |
| Vicky Busch                                                   | Maximus                  | 59.474% |
| <b>FEI YOUNG RIDER TEAM &amp; GAIG/USDF/NAJYRC QUAL.</b>      |                          |         |
| Audrey Jones                                                  | Rondo del Rey            | 60.395% |
| <b>NAJYRC JUNIOR TEAM &amp; GAIG/USDF QUAL.</b>               |                          |         |
| Cassie Schmidt                                                | Riviera                  | 62.432% |
| Caroline Adams                                                | Uniek                    | 61.757% |
| Cassie Schmidt                                                | Frederic                 | 57.432% |
| <b>FEI YOUNG RIDER FREESTYLE &amp; USDF/USEF/NAJYRC QUAL.</b> |                          |         |
| Audrey Jones                                                  | Rondo del Rey            | 64.375% |



PHOTOS: TREC PHOTOGRAPHICS

Regina Milliken on Riga at Dressage Across the Lake.

Continued on page 19

# Volunteer Hours

As of June 14, 2011

| NAME                     | # OF HOURS |
|--------------------------|------------|
| Aertker, Kathleen        | 0          |
| Appel, William           | 6          |
| Arndt, Dianne            | 0          |
| Banister, David*         | 6          |
| Barca, Allison           | 4          |
| Baronne, Nicole          | 0          |
| Barowka, Jamie           | 4          |
| Barowka, Logan**         | 4          |
| Barry, Shelley           | 0          |
| Beckers, Emma**          | 16         |
| Beckers, Kalie**         | 3.5        |
| Beckers, Gerlinde*       | 26.5       |
| Beckers, Mark            | 8          |
| Bellone, Grace**         | 0          |
| Bendzans, Bonnie         | 0          |
| Burba, Nancy             | 2.5        |
| Busch, Vickie            | 0          |
| Bush, Gloria*            | 0          |
| Byerly, Anne**           | 16         |
| Caponetto, Allison       | 0          |
| Cates, Lauren            | 0          |
| Cato, Megan**            | 0          |
| Coleman, Camille**       | 0          |
| Coleman, Lena            | 0          |
| Connerly, Betty          | 4          |
| Constantin-Page, Lisette | 4          |
| Copeland, Watson D.      | 0          |
| Cowan, Maria*            | 0          |
| Crowley, Michelle        | 0          |
| Croxton, Martha Ann**    | 0          |
| Cummins, Elizabeth*      | 1          |
| Dauterive, Cameron**     | 10         |
| Dauterive, Judi*         | 6.5        |
| Davis, Sherrie           | 0          |
| Davis, Tiffany           | 4          |
| DeFelice, Fran           | 0          |
| Delagrang, Cheryl        | 0          |
| DePrato, Debra           | 0          |
| Dockery, Meliora         | 0          |
| Doleac, Rebecca          | 23         |
| Edwards, Mary Alice      | 6.5        |
| Eglesfield, Bruce        | 0          |
| Embree, Emily            | 0          |
| Epperson, Deborah*       | 8          |
| Fenner, Jessica          | 0          |
| Ferraro, Stacy L         | 0          |
| Ferrell, Bonnie          | 14         |
| Freeman, Laura           | 0          |
| Freeman, Jr., Richard    | 0          |
| Freeman, Traci           | 0          |
| Fricke, Kristine         | 0          |
| Gauthreaux, Kate**       | 0          |
| Gordon, Deborah          | 0          |
| Gregory, Paula*          | 42.5       |
| Guza, Eileen             | 0          |
| Hall, Carmen*            | 6          |
| Hall, Mary Elizabeth     | 0          |
| Hargrove, Kelsey Lee**   | 0          |
| Harmon, Elaine*          | 14         |

| NAME                     | # OF HOURS |
|--------------------------|------------|
| Harrison Ginny Roberts   | 0          |
| Hebert, Erin             | 8          |
| Hebert, Merideth         | 0          |
| Hemb, Claudia**          | 0          |
| Hemb, Eva**              | 0          |
| Hemb, Izzy**             | 0          |
| Henry, Constance         | 5.5        |
| Hingle-Elkins, Tara      | 0          |
| Hoffeld, Amelia**        | 0          |
| Hornbeak, Anne           | 4          |
| Hughes, Laura            | 8          |
| James, Juliette**        | 0          |
| Jenkins, Lorraine        | 0          |
| Katz, Lynda              | 5          |
| Keen, Kim                | 0          |
| Kitchens, Sheri          | 0          |
| Kitchens, Bella**        | 0          |
| Knudson, Susanne         | 10         |
| Kornak, Anne             | 0          |
| Kornak, Nicole**         | 0          |
| Kurzius, Rene            | 0          |
| Laguna, Alexis**         | 0          |
| Lanaux, Hilda            | 4          |
| Landreaneau, Nicole*     | 0          |
| Lane, AnMarie            | 0          |
| Leake, David             | 0          |
| Leake, Joanna            | 0          |
| MacGregor, Kim           | 7          |
| Martin, Janel*           | 6          |
| Marullo, Kim             | 0          |
| Mayer, Anne              | 4          |
| McCarthy, Hildy          | 0          |
| McClure, Cecile**        | 0          |
| Meeks, Ashley            | 0          |
| Mendel-John, Elaine      | 6          |
| Merritt, Barbara*        | 0          |
| Miller-Tarver, Charlotte | 0          |
| Milliken, Regina         | 0          |
| Morris, Leslie*          | 2          |
| Morrison, Corinne        | 0          |
| Mosing, Madeline**       | 0          |
| Murray, Ashley           | 1          |
| Murray, Bernadette       | 0          |
| O'Neal, Teri             | 0          |
| O'Neal, Lauren           | 0          |
| Page, Simone**           | 0          |
| Palowsky, Stacey         | 0          |
| Partington, Beth         | 0          |
| Pastuszek, Alesandra     | 14         |
| Pellegrin, Dylan**       | 0          |
| Pellegrin, Kayla**       | 0          |
| Penney, Nancy            | 0          |
| Perez, Zoe Elise**       | 0          |
| Peterson, Craig          | 5          |
| Peterson, Greta          | 2          |
| Petratis, Dawn           | 0          |
| Petraneck, Carol         | 0          |
| Phelps, Jamie            | 0          |
| Phelps, Mollie           | 4          |

| NAME                        | # OF HOURS |
|-----------------------------|------------|
| Poole, Genita               | 0          |
| Quast, Lynn*                | 0          |
| Ragas, Sydney**             | 2          |
| Rawls, Christy              | 4          |
| Rice, Margaret*             | 0          |
| Richards, Sally*            | 4          |
| Richter, Kendell Marie**    | 0          |
| Ritchie, Rhonda             | 0          |
| Roberts, Jacob**            | 0          |
| Roca, Ruth                  | 10         |
| Rolison, Sylvia             | 0          |
| Roth, Stevie Lynn**         | 0          |
| Roth, Anna**                | 0          |
| Rouse, Kittye               | 0          |
| Sams, Susan                 | 0          |
| Samson, Angela              | 0          |
| Sanantonio, Christy*        | 0          |
| Santopadre, Alicia          | 0          |
| Scheuermann, Julia**        | 0          |
| Schiefelbein, Victoria      | 0          |
| Schnauder, Victoria**       | 0          |
| Schranz, Mary               | 15.5       |
| Schultz, Kimberly           | 10         |
| Schultz, Samantha           | 0          |
| Schultz, Sydney             | 0          |
| Serafin, Cameron**          | 0          |
| Shepard, Alice**            | 2          |
| Shepard, Cathy              | 0          |
| Shepard, Margaret**         | 0          |
| Stagg, Julie                | 0          |
| Stirling, Francie           | 0          |
| Stolzenhaller, Emma**       | 0          |
| Stoyanoff, Svenya**         | 0          |
| Summers, Lori               | 0          |
| Thavarajah, Kim             | 0          |
| Titus, Corinne              | 0          |
| Truett, Sarah**             | 9          |
| VanderVliet, Laura          | 0          |
| Varisco, Alex**             | 2          |
| Varisco, Kelley             | 23         |
| Villani, Stephanie          | 0          |
| Wade, Nell                  | 4          |
| Wesche, Kathryn             | 0          |
| West, Chrissy               | 8          |
| White, Lolly                | 5.5        |
| White, Ted                  | 6.5        |
| Wijnbergen-Lusthuis, Sophia | 4          |
| Williams, Claire Marie**    | 0          |
| Williamson, Stephanie       | 0          |
| Willis-Keen, Kim            | 0          |
| Worley, Nicole              | 0          |
| Zabenco, Susan              | 0          |
| Zepernick, Mattie**         | 0          |
| Zepernick, Sheila**         | 0          |
| <b>Non-SEDA members</b>     |            |
| Waldrip, Jodi               | 4          |
| Walters, Brenda             | 6          |
| Draper, Claire              | 4          |



## Stay In Touch

### Are You Getting Emails from SEDA?

SEDA frequently distributes via email information we feel would be beneficial to our members. While we make every effort to maintain an updated email list, many times these messages are rejected.

Here are some tips if you don't think you're getting the message:

- check your junk mail
- add [offcoursenews@hotmail.com](mailto:offcoursenews@hotmail.com) to your white list and/or address book
- contact Nicole at [offcoursenews@hotmail.com](mailto:offcoursenews@hotmail.com) so she can make sure your correct email address is on file
- notify Nicole at [offcoursenews@hotmail.com](mailto:offcoursenews@hotmail.com) if your email address changes.

## Gracias

Thanks to **everyone** who submitted content for this issue! Special thanks to Marie Cobb, Judi Dauterive, Paula Gregory, Christy Sanantonio, and Ted White. Please continue to send in your material!

All SEDA members over the age of 18 are required to complete 4 volunteer hours, or submit a \$25 fee, to be eligible for year-end awards. See Awards Program rules for complete details.

\*\*SEDA board members and/or chairpersons are not required to complete additional volunteer hours to be eligible for year-end awards.

\*\*Riders under the age of 18 are highly encouraged, but not required, to complete volunteer hours.

# Newsworthy

## Exclusive Presentation at the 2011 Adequan/USDF National Symposium - For the First time in one Arena!

The United States Dressage Federation is very excited to announce that the 2011 Adequan/USDF National Symposium, to be held December 3-4 at the Del Mar Fairgrounds in Del Mar, CA, will feature the talented USEF national dressage coaches; Anne Gribbons (Technical Advisor and National Coach), Scott Hassler (Young Horse Coach), Debbie McDonald (Developing Coach), and Jeremy Steinberg (Youth Coach).

Working together for the first time in one arena, the coaches will present a step-by-step method to starting a young horse from breaking to riding and provide tips on improving seat and position for effective training as they show the 'building blocks' to success, through Grand Prix. "It's exciting that USDF is able to provide such a wonderful platform to showcase the American program and talents of our four US dressage coaches. This will be an incredible and unique opportunity to hear their philosophies first hand and see how they work together towards a common goal," stated George Williams, USDF President.

Anne Gribbons, Technical Advisor and National Coach, is an FEI 5\* judge and a member of the FEI Dressage Committee.

Anne states "For this year's symposium, the USDF has graciously agreed to showcase the USEF teaching staff, and I am delighted at this opportunity for all of us



to get together and share our collective knowledge".

Scott Hassler, USEF National Young Dressage Horse Coach, co-chairs the USDF Sport Horse Committee, is a member of the USEF Dressage Committee, the USEF Breeders' Committee, and the USEF Strategic Planning Committee.

Debbie McDonald, USEF Developing Coach, was named AHSA (now USEF) Equestrian of the Year, USOC Woman of the Year and, aboard Peggy Thomas' mare, Brentina, won the team and individual Gold Medals in the PanAmerican games in 1999. In 2003, she went on to become the first American to win the FEI World Cup title and was named USOC Athlete of the Year.

Jeremy Steinberg, USEF National Youth Coach, was the 1996 winner of the North American Young Rider Championships individual Gold Medal and Team Silver Medal and was awarded the Fiona Baan "Pursuit of Excellence Memorial Trophy". In 2010 Jeremy was awarded the inaugural "Albers Award", presented to the Chef d'Equipe who best demonstrates an extraordinary level of dedication, enthusiasm and team spirit at the North American Jr/YR Championship.

For more information about the 2011 Adequan/USDF National Symposium, visit the USDF website or contact the USDF office. ♣

## Send in Your Cross-Country Photos for the Jan Byyny Column!

Have you ever wondered what a top international rider and trainer would say about your galloping position? What would they say about how you and your horse look coming down a drop

fence or clearing a big table? Well here's your chance to find out! Eventing USA is continuing their popular column in which international eventer Jan Byyny will critique your photos.

Each month, Jan reviews a few reader-submitted photos and gives pointers to riders of all levels.

To submit your photo, e-mail an original photo or scanned image (at least 300 dpi) to emily@useventing.com, or send your photo to Emily Daily, 525 Old Waterford Road, NW, Leesburg, VA, 20176. If the photo was taken by a professional, please include the credit information as well. We will return all photos that are sent to the office.

Photos should be taken from the side to give Jan the best angle for her critique. ♣

## Rebecca Broussard Travel Grants

Do you have the desire to become an International Rider? Opportunity is knocking! The first step in being considered for the Travel grant to the Event at Rebecca Farm CIC3\* is to fill out this one page application. Deadline for your application is June 15, 2011

For the next five years, the grant will award over \$50,000 annually to event riders competing at the advanced level in an effort to relieve training, competition, and travel costs. The first portion of the grant will award over \$20,000 annually to several riders, assisting with the travel expenses to the Event at Rebecca Farm to compete in the CIC3\* division. The international portion of the Rebecca Broussard Grant will award \$30,000 to an individual rider, to assist with expenses incurred while competing internationally. All advanced level riders with the desire to become an international event rider

who have not represented United States at the CCIO3\* or CCIO4\* are eligible for the Grants.

More information about the Rebecca Broussard Grant is available at <http://www.useventing.com/endowment.php?id=2758>. ♣

### Dates And Locations Announced For The 2011 IDHSNA/USEA Future Event Horse Championships

The USEA is pleased to announce that the dates and locations for the fourth annual 2011 IDHSNA/USEA Future Event Horse Championships have been confirmed.

The East Coast Championships will be held at Morven Park in Leesburg, Virginia on September 30.

The West Coast Championships will be held in conjunction with the Ram Tap Horse Trials in Fresno, California on October 21.

The entry fee for both East and West Coast Championships will be \$75 plus a \$10 USEA Starter Fee. More details are available on the FEH Calendar.

The IDHSNA/USEA Future Event Horse Program is for yearlings, two-year-olds, and three-year-olds and judges their potential to become successful event horses. In FEH classes, horses are judged on both their conformation and the quality and correctness of their gaits. Upon entering the arena, their handlers are asked to stand the horses up for inspection to allow the judge to analyze the strengths and weaknesses in their conformation. Then, they are asked to walk a 15-meter triangle, and then trot a 30-meter triangle. Finally, they are asked to stand up one last time for the judge to make their final observations.

For more information on the USEA Future Event Horse Series, click on the FEH logo on

the USEA homepage, or contact Wendy Weinstein at [wendy@useventing.com](mailto:wendy@useventing.com) or simply call the USEA office at 703-779-0440. ♣



### USEF's High School Equestrian Athlete Program Kicks Off Third Year

The USEF High School Equestrian Athlete program is officially underway for the 2011-2012 school year! Students are encouraged to sign up now to count their summer practice and competition hours toward their goal of lettering as a USEF High School Equestrian Athlete.

The USEF High School Equestrian Athlete program is open to equestrian athletes involved in all breeds and disciplines who are enrolled in grades 9-12. The program honors participants who document their equestrian training and competitions with a varsity letterman patch, year pin and certificate commemorating their achievement. Grants also will be offered for students who complete the program and meet additional requirements.

"This is becoming the new standard of achievement among young equestrian athletes," explains Lori Rawls, executive director at USEF. "We have athletes who are thrilled to earn their first letter because their high schools don't recognize equestrian as a competitive sport. We also have athletes who have already earned letters through their school's equestrian program, but realize this is a symbol of achievement within the national equestrian community. Either way, this is a perfect fit."

Annual program registration and USEF membership are required to participate. In addition, retroactive applications are available to high school students who are interested in earning their letters for previous school years. The program—now in its third year—is tracking more than 3,200 students who have earned, or are in the process of earning, their letters and pins.

For more information, or to enroll, visit the USEF website.

If you have additional questions about the program or need help signing up, contact Mary Vance at [mvance@usef.org](mailto:mvance@usef.org). ♣



*In  
Sympathy*

SEDA extends its condolences to Vicki Macgowan on the loss of her father, Basil Eccles.

### Got News?

Send it in!  
Get your name  
(or photo) in  
print! Send your  
submissions to  
the editor at  
[offcoursenews@hotmail.com](mailto:offcoursenews@hotmail.com).





## Horse Laughs

### The Seven Stages of Aging on Horseback

- 1) Fall off pony. Bounce. Laugh. Climb back on. Repeat.
- 2) Fall off horse. Run after horse, cussing. Climb back on by shimmying up horse's neck. Ride until sundown.
- 3) Fall off horse. Use sleeve of shirt to staunch bleeding. Have friend help you get back on horse. Take two Advil and apply ice packs when you get home. Ride next day.
- 4) Fall off horse. Refuse advice to call ambulance; drive self to urgent care clinic. Entertain nursing staff with tales of previous daredevil stunts on horseback. Back to riding before cast comes off.
- 5) Fall off horse. Temporarily forget name of horse and name of husband. Flirt shamelessly with paramedics when they arrive. Spend week in hospital while titanium pins are screwed in place. Start riding again before doctor gives official okay.
- 6) Fall off horse. Fail to see any humor when hunky paramedic says, "You again?" Gain firsthand knowledge of advances in medical technology thanks to stint in ICU. Convince self that permanent limp isn't that noticeable. Promise husband you'll give up riding. One week later purchase older, slower, shorter horse.
- 7) Slip off horse. Relieved when artificial joints and implanted medical devices seem unaffected. Tell husband that scrapes and bruises are due to gardening accident. Pretend you don't see husband roll his eyes and mutter as he walks away. Give apple to horse.

# Meeting Minutes

Monday, May 23, 2011 • Mandeville, LA

Board members present: *Lynn Quast, David Banister, Leslie Morris, Janel Martin, Nicole Landreneau, Christy Sanantonio, Carmen Hall, Elizabeth Cummins, Paula Gregory.*

Guests Present: *Laura Freeman, Kimberly Schultz.*

The meeting commenced at 7:20 p.m. The minutes were approved from the March meeting.

*Treasurer's Report:* Janel presented the Board with a current balance sheet. Lynn motioned to accept the Report. David seconded the motion and the Treasurer's Report was approved. The Fleur de Leap show was highly successful and profitable. Janel also shared with the Board the revised SEDA guidelines for Young Horse year-end awards along with SEDA recognized events and volunteer hours.

*Dressage Chair Report:* Leslie shared that the Pilates Night with *Southern Bridle Magazine's*

fitness expert and contributor Kerrie Ann Frey was fun and informative. The Adult Schooling Show was discussed and the search for a judge is still on. Possible dates for this event is October 1-2 with a Ride-a-Test portion on Saturday.

Heather Blitz is scheduled to come to Stirling Farm in early August for a clinic. This highly anticipated clinic has reached capacity but persons interested in auditing this clinic should contact David at Stirling Farm.

*Eventing Chair Report:* Elizabeth reported that the Fleur de Leap show was successful. She suggested to the Board to possibly have a new cross-country course for the show next year. Elizabeth mentioned that adding a walk/trot class for little children and beginner riders called 'DoodleBug' would draw even more youth interest for the show.

*Juniors Chair Report:* Paula reported that the Juniors Show will be held at Amen Corner Farm on June 4th-5th. Leslie Morris will be the judge with David Banister scribing, and Gerlinde Beckers will coordinate all of the volunteers for the show. There will be a potluck lunch on Saturday in addition to the clear round jumping. To be a part of this show as a sponsor is only \$20, so please contact Paula if you are interested.

*Newsletter Chair Report:* Nicole reported that she was looking into social media outlets as another avenue to communicate with SEDA members (Twitter, Facebook, etc.). The deadline for submissions for the next newsletter is June 10th.

*Membership Chair Report:* Lynn shared with the Board a message from Maria that she would still very much like to co-chair with Carmen Hall as Membership Chair and that she would like to stay on the Board as an active member.

The next meeting will be held on Monday, August 29, 2011 at 7:00 p.m.

Kindly submitted by Christy Sanantonio. ♣



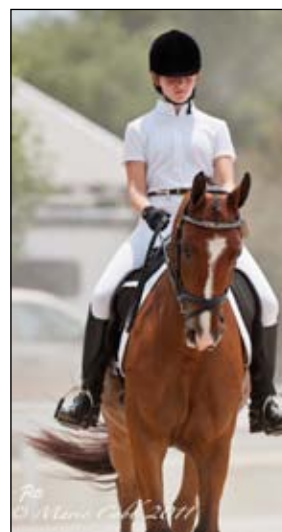
PHOTO: REE PHOTOGRAPHICS  
© Marie Gull 2011

| RIDER                                             | HORSE                    | SCORE   |
|---------------------------------------------------|--------------------------|---------|
| <b>USEF TRAINING LEVEL TEST 1</b>                 |                          |         |
| Elizabeth Richards                                | Artistic Inspiration     | 55.000% |
| <b>USEF TRAINING LEVEL TEST 2</b>                 |                          |         |
| Elizabeth Richards                                | Artistic Inspiration     | 56.071% |
| <b>USEF TRAINING LEVEL TEST 3 GAIG/USDF QUAL.</b> |                          |         |
| Julie Breland                                     | Not An Issue             | 55.600% |
| Kalie Beckers                                     | Bienvenu ZSH             | 67.600% |
| Kalie Beckers                                     | Luminous Lady            | 63.200% |
| Frances Helene Hollis                             | Bullet                   | 53.200% |
| Jodie Stevens Kelly                               | Broadway                 | 72.400% |
| Nancy Burba                                       | Watusi                   | 67.200% |
| Regina Milliken                                   | Riga                     | 66.800% |
| Anne Hornbeak                                     | Eykaterina               | 64.800% |
| Bruce Eglesfield                                  | Lucie                    | 62.800% |
| <b>USDF INTRODUCTORY LEVEL TEST A</b>             |                          |         |
| Logan Barowka                                     | Angels Inshalamir        | 61.250% |
| <b>USDF INTRODUCTORY LEVEL TEST B</b>             |                          |         |
| Logan Barowka                                     | Angels Inshalamir        | 58.750% |
| <b>USEF FIRST LEVEL TEST 2</b>                    |                          |         |
| Elaine Mendel-John                                | Triple S Blackwood Image | 63.448% |
| Robyn Taliaferro                                  | Glenormiston Billies Bay | 62.069% |
| Jordan Fraser                                     | Urollet                  | 65.172% |
| Alexandra Varisco                                 | Lavalais                 | 64.138% |
| Isabel Franklin                                   | Posner                   | 62.414% |
| Anne Hornbeak                                     | Eykaterina               | 68.966% |
| Bruce Eglesfield                                  | Lucie                    | 65.517% |
| Elizabeth Cummins                                 | Vinnie                   | 63.103% |
| <b>USEF FIRST LEVEL TEST 2</b>                    |                          |         |
| Elaine Mendel-John                                | Triple S Blackwood Image | 61.351% |
| <b>USEF FIRST LEVEL TEST 3 GAIG/USDF QUAL.</b>    |                          |         |
| Mary Alice Edwards                                | Fortoula                 | 69.355% |
| Robyn Taliaferro                                  | Glenormiston Billies Bay | 59.032% |
| Kalie Beckers                                     | Luminous Lady            | 67.419% |
| Kalie Beckers                                     | Bienvenu ZSH             | 67.097% |
| Kaley Breland                                     | Scooby Doo               | 64.516% |
| Alexandra Varisco                                 | Lavalais                 | 61.290% |
| Mimi Peters                                       | Moet                     | 68.387% |
| Elizabeth Cummins                                 | Vinnie                   | 64.194% |
| <b>USEF SECOND LEVEL TEST 1</b>                   |                          |         |
| Mattie Zepernick                                  | Amarula                  | 66.857% |
| Bruce Eglesfield                                  | Debonaire                | 68.571% |
| <b>USEF SECOND LEVEL TEST 3 GAIG/USDF QUAL.</b>   |                          |         |
| Louise V. White                                   | Cold Snap                | 64.286% |
| Mattie Zepernick                                  | Nereide                  | 69.286% |

| RIDER                                                              | HORSE                    | SCORE   |
|--------------------------------------------------------------------|--------------------------|---------|
| <b>USEF THIRD LEVEL TEST 1</b>                                     |                          |         |
| Louise V. White                                                    | Cold Snap                | 57.895% |
| Kathryn Chabaud                                                    | Zydeco ZSH               | 57.105% |
| Lyndon Rife                                                        | Jago                     | 69.211% |
| Bruce Eglesfield                                                   | Debonaire                | 55.263% |
| <b>USEF THIRD LEVEL TEST 3 GAIG/USDF QUAL.</b>                     |                          |         |
| Bonnie Canter                                                      | Brindabah's Ruben Heizen | 67.949% |
| Elaine Harmon                                                      | Lincoln                  | 63.590% |
| Kathryn Chabaud                                                    | Zydeco ZSH               | 63.077% |
| Lyndon Rife                                                        | Jago                     | 67.436% |
| Vicky Busch                                                        | Gabriella                | 58.974% |
| <b>USEF FOURTH LEVEL TEST 1</b>                                    |                          |         |
| Bonnie Canter                                                      | Brindabah's Ruben Heizen | 71.429% |
| Lyndon Rife                                                        | Rembrandt                | 69.714% |
| Anne Hornbeak                                                      | Hello Dolly              | 67.143% |
| <b>USEF FOURTH LEVEL TEST 2</b>                                    |                          |         |
| Lyndon Rife                                                        | Rembrandt                | 64.595% |
| Anne Hornbeak                                                      | Hello Dolly              | 61.892% |
| <b>USEF FOURTH LEVEL TEST 3 GAIG/USDF QUAL.</b>                    |                          |         |
| Tiffany Davis                                                      | Zhivago                  | 60.500% |
| <b>FEI TEST OF CHOICE AND GAIG/USDF QUAL.</b>                      |                          |         |
| Allison Barca                                                      | Roux                     | 56.579% |
| Christy Sanantonio                                                 | Grenadier                | 56.579% |
| Cameron Dauterive                                                  | Don Giovanni             | 60.263% |
| Anne Hornbeak                                                      | Battle                   | 65.000% |
| Leslie Morris                                                      | Meant To Be              | 58.947% |
| Vicky Busch                                                        | Maximus                  | 57.632% |
| <b>FEI FREESTYLE TEST OF CHOICE AND GAIG/USDF QUAL.</b>            |                          |         |
| Jodie Stevens Kelly                                                | Manhattan                | 68.000% |
| <b>FEI YOUNG RIDER INDIVIDUAL TEST &amp; USDF/USEF NAYRC QUAL.</b> |                          |         |
| Audrey Jones                                                       | Rondo del Rey            | 59.079% |
| <b>NAJC JUNIOR INDIVIDUAL &amp; GAIG/USDF QUAL.</b>                |                          |         |
| Cassie Schmidt                                                     | Riviera                  | 65.789% |
| Cassie Schmidt                                                     | Frederic                 | 58.026% |
| Caroline Adams                                                     | Uniek                    | 52.368% |
| <b>YOUNG HORSE QUALIFYING TEST OF CHOICE USEF MARKEL</b>           |                          |         |
| Jodie Stevens Kelly                                                | Stanley Holister         | 79.200% |
| Jodie Stevens Kelly                                                | Ciësto-Strona            | 75.000% |
| Sophia Wijnbergen-Lusthuis                                         | Louisiana                | 68.600% |
| Sophia Wijnbergen-Lusthuis                                         | Marigny                  | 66.000% |



See? Pilates makes you a better rider! Getting physical at Dressage Across the Lake.



Mattie Zepernick on Amarula.



Anne Hornbeak at Dressage Across the Lake.

PHOTOS: FREE PHOTOGRAPHICS

# Mug Shots (the Good Kind!)



## SEDA Prix Caprilli & DoodleBug Tests

SEDA has developed a series of Prix Caprilli tests for Intro Level, Training Level and First Level for use at our local shows.

There is also a Doodle Bug test for our leadline graduates: it's a walk (trot optional) test designed to build confidence in our youngest riders.

The intent of these tests is to provide both standardization and variety for show participants.

Copies of the tests are available for download on the SEDA web site.



## Welcome New Members

Jaide Guillory  
Covington, LA

Lily Miller  
Folsom, LA



## In Sympathy

SEDA extends its condolences to Stacy Ferraro on the loss of Kina.



PHOTO COURTESY OF NICOLE LANDRENEAU

*Megan Cato on Newtown Rex at the Juniors Show.*



PHOTO COURTESY OF JUDI DAUTERIVE

*Ashley Murray's new career as a waitress!*



PHOTO COURTESY OF TED WHITE

*Grey Cummins on Appy Go Lucky.*



PHOTO COURTESY OF JUDI DAUTERIVE

*Cameron Dauterive showing some pony love!*



PHOTO COURTESY OF TED WHITE

*Proud DoodleBug winner; Maddie Mazetti on Snickers Satisfies.*



PHOTO COURTESY OF NICOLE LANDRENEAU

*Alexis Laguna and Zutch sharing a moment.*

# Serenity May Schooling Dressage Results

| RIDER                                   | HORSE           | SCORE   |
|-----------------------------------------|-----------------|---------|
| <b>TRAINING LEVEL TEST 3</b>            |                 |         |
| Sophia Wijnbergen                       | Marigny         | 63.200% |
| Sophia Wijnbergen                       | Plain Jane      | 62.200% |
| Eileen Guza                             | Bella The Great | 61.200% |
| Sheri Kitchens                          | Koss            | 57.600% |
| Alice Shepard                           | Dora            | 54.400% |
| <b>FIRST LEVEL TEST 1</b>               |                 |         |
| Kalie Beckers                           | Luminous Lady   | 65.517% |
| Kalie Beckers                           | Traveler        | 63.448% |
| <b>INTERMEDIARE II</b>                  |                 |         |
| Allison Barca                           | Roux            | 58.947% |
| <b>PRIX ST GEORGES</b>                  |                 |         |
| Cameron Dauterive                       | Don Giovanni    | 57.369% |
| <b>FIRST LEVEL TEST 2</b>               |                 |         |
| Kalie Beckers                           | Traveler        | 63.243% |
| Elizabeth Cummins                       | Vinnie          | 62.258% |
| <b>FIRST LEVEL TEST 3</b>               |                 |         |
| Kalie Beckers                           | Luminous Lady   | 66.129% |
| <b>INTERMEDIARE I</b>                   |                 |         |
| Sophia Wijnbergen                       | Zhivago         | 60.790% |
| <b>PRIX ST GEORGES</b>                  |                 |         |
| Cameron Dauterive                       | Don Giovanni    | 59.737% |
| <b>PRIX CAPRILLI FIRST LEVEL TEST A</b> |                 |         |
| Elizabeth Cummins                       | Vinnie          | 63.667% |
| <b>PRIX CAPRILLI INTRO 1</b>            |                 |         |
| Kym Marullo                             | Talix           | 59.445% |
| <b>PRIX CAPRILLI INTRO 2</b>            |                 |         |
| Kym Marullo                             | Talix           | 61.429% |
| <b>USEA TRAINING TEST A</b>             |                 |         |
| Ginny Harrison                          | The Illusionist | 63.182% |
| <b>USDF INTRODUCTORY TEST A</b>         |                 |         |
| Corinne Titus                           | Marigny         | 59.375% |
| <b>USEA NOVICE TEST A</b>               |                 |         |
| Alex Varisco                            | Vinnie          | 71.739% |
| <b>USEA TRAINING TEST B</b>             |                 |         |
| Ginny Harrison                          | The Illusionist | 59.546% |

| RIDER                           | HORSE                      | SCORE   |
|---------------------------------|----------------------------|---------|
| <b>USDF INTRODUCTORY TEST B</b> |                            |         |
| Alex Varisco                    | Abbeyleux Maid Of Diamonds | 65.000% |
| Kate Gauthreaux                 | Tinkerbelle                | 63.125% |
| Kym Marullo                     | Talix                      | 58.125% |
| Corinnie Titus                  | Marigny                    | 57.500% |
| <b>USDF INTRODUCTORY TEST C</b> |                            |         |
| Alex Varisco                    | Abbeyleux Maid Of Diamonds | 61.500% |
| Kym Marullo                     | Talix                      | 53.500% |
| Kate Gauthreaux                 | Tinkerbelle                | 51.363% |
| <b>TRAINING LEVEL TEST 1</b>    |                            |         |
| Sophia Wijnbergen               | Romeo                      | 64.166% |
| Alice Shepard                   | Dora                       | 64.091% |
| Alex Federtine                  | Elvira                     | 62.916% |
| Sheri Kitchens                  | Koss                       | 58.333% |
| Deborah Epperson                | Sparky                     | 46.666% |
| <b>TRAINING LEVEL TEST 2</b>    |                            |         |
| Eileen Guza                     | Bella The Great            | 68.928% |
| Sophia Wijnbergen               | Romeo                      | 65.357% |
| Alex Federtine                  | Elvira                     | 62.500% |
| Sheri Kitchens                  | Koss                       | 60.714% |
| Deborah Epperson                | Sparky                     | 50.000% |



PHOTO COURTESY OF NICOLE LANDRENEAU

Dressage equitation class at the SEDA Juniors Show.



PHOTO: REE PHOTOGRAPHICS

Kathryn Chabaud on Zydeco ZSH at Dressage Across the Lake.

## SEDA VOLUNTEER HOURS FORM

Mail form to: **Carmen Hall, 121 Bennett Drive, Covington, LA 70435** within 14 days after volunteering. Thank you!

VOLUNTEER'S NAME (PLEASE PRINT)

IF DIFFERENT FROM ABOVE, NAME OF MEMBER TO WHOM HOURS ARE TO BE CREDITED

ADDRESS

CITY

STATE

ZIP

PHONE (INDICATE HOME / OFFICE / MOBILE)

E-MAIL

EVENT NAME

DATE(S)

# OF HOURS

EVENT MANAGER'S NAME

SIGNATURE

DATE

## EVENTING RESULTS FORM

Mail results to: **Kimberly Schultz, 18648 Hwy 40, Covington, LA 70435** within 14 days after the last day on which the horse trial/combined test was held. Use one form per horse/rider combination. Thank you!

SEDA Award Points For the Awards Chair  
 Placement \_\_\_\_\_ Completed \_\_\_\_\_  
 Clean Cross Country \_\_\_\_\_ Total \_\_\_\_\_  
 Postcard mailed  Added to YTD totals  
 Sent to USEA Area III or IV

RIDER'S NAME (PLEASE PRINT) HORSE'S SHOW NAME

ADDRESS

CITY

STATE

ZIP

PHONE (INDICATE DAY OR EVENING)

E-MAIL

EVENT NAME (INDICATE HT,CT, OR OTHER)

DATE(S)

DIVISION

NO. OF HORSES IN DIVISION

PLACEMENT IN DIVISION

I am a:  Senior  Junior This Show is Recognized by:  USEA  SEDA

Penalty Points:  Dressage \_\_\_\_\_  Stadium \_\_\_\_\_  Cross Country \_\_\_\_\_  Total \_\_\_\_\_

EVENT SECRETARY/MANAGER NAME

SIGNATURE

DATE

EVENT MANAGER'S NAME

SIGNATURE

DATE

## Trainer Directory

**Nancy Burba**  
Dressage  
(225) 642-5749  
(225) 938-0390  
hdnacres@cox.net

**Vicky Busch**  
Dressage  
(985) 796-3317  
vickybusch@charter.net

**Bruce Eglesfield**  
Starting young horses •  
Re-education  
252-414-5730  
aussieacresnc@hotmail.com

**Anne Hornbeak**  
Dressage  
985-796-9434  
annehornbeak@aol.com

**Regina Milliken**  
Dressage • Starting  
young horses  
(985) 796-3650  
info@oakhillranch.com

**Leslie Morris**  
Dressage • Hunter/Jumper  
(504) 833-7923  
(504) 858-5944  
leslielm57@yahoo.com  
stirlingfarm.info.com

**Lynn Quast**  
Dressage • Eventing  
(985) 893-4500  
(504) 905-3690  
lquast4184@aol.com

**Laura VanderVliet**  
Dressage • Eventing • Jumping  
(337) 893-3535  
laura@sterlingsilverstables.com

## Equine Facility Directory

**Anne Hornbeak Stables**  
15081 Hwy 40  
Folsom, LA 70437  
985-796-9434  
annehornbeak@aol.com

**Aussie Acres Training**  
(located at Oak Hill Ranch)  
P.O. Box 957  
Folsom, LA 70437  
252-414-5730  
aussieacresnc@hotmail.com

**Nancy Burba**  
1300 Lawrence Pkwy  
St. Gabriel, LA 70776  
(225) 642-5749  
(225) 938-0390  
hdnacres@cox.net

**Busch Sporthorses LLC**  
79418 Mathies Rd  
Folsom, LA 70437  
Vicky Busch  
(985) 796-3317  
vickybusch@charter.net  
www.buschsporthorse.com

**Equi-Best Equestrian Center**  
82136 Hwy 437  
Covington, LA 70435  
Lynn Quast  
(985) 893-4500  
(504) 905-3690  
lquast4184@aol.com

**Oak Hill Ranch**  
79234 Hwy 25  
Folsom, LA 70437  
(985) 796-3650  
Sharon Londono  
info@oakhillranch.com  
www.oakhillranch.com

**Sterling Silver Stables**  
11130 Harris Lane  
Maurice, LA 70555  
(337) 893-3535  
Jennifer Mosing  
jennifer@sterlingsilverstables.com  
www.sterlingsilverstables.com



To have your facility or services included in this directory, please see the application and additional information on the SEDA web site ([www.sedariders.org](http://www.sedariders.org)).

*"People talk about size, shape, quarters, blood, bone, muscle, but for my part, give me a hunter with brains: he has to take care of the biggest fool of the two and think for both."*

## CLASSIFIEDS

Please send your ads to: Gloria Bush  
(985) 893-1910 or [gbush17@charter.net](mailto:gbush17@charter.net)

### HORSES

**15 y/o, 15.2 chestnut Thoroughbred gelding;** College bound owner; Schooling Second/shown Training—pops over small jumps; lovely manners; needs an experienced rider to achieve roundness; \$3,000 negotiable to good home. Will consider lease-purchase. Contact [lizziekenelly@yahoo.com](mailto:lizziekenelly@yahoo.com) for more info.

**Brigadier is for sale!** Dutch x TB medium frame, modern type, long legs 4-1/2 yo. 17hh. Athletic, catlike, light on his feet. Has been to two shows; calm, focused, well behaved due to his excellent character and confident start in life. Lots of fun. Dark bay with white, like his sire Contango. Suitable for an AA or YR due to his kind and gentle nature. Will make a good friend and willing partner. More info, pics and video at [www.rosehillhanoverians.moonfruit.com](http://www.rosehillhanoverians.moonfruit.com) or call Annie at (281) 433-8208 Houston, TX. He's just waiting for his special person – will it be you?

### BOARDING AVAILABLE

**Boarding Available at Oak Hill Ranch.** Pasture Board \$300 month. Limited Stall Boarding available at \$600 month. Call (985) 796-3650 for further details.

**Full board available at Amen Corner Farm.** Your trainer welcome to come and teach you. Limited stalls available. Call Rene for further details. (504) 669 8669.

**www.farawayfarm.homestead.com** Boarding \$350, individual outdoor stalls in private pastures. Full use of barn amenities, regulation large dressage ring, owners on premises, Covington/Folsom area. Bonnie (985) 796-5413.

### TACK

**Courbette Double Bridle.** Black, Cob size. Raised and Padded with French cavesson, Very lightly used. Excellent condition. Call Elaine Harmon at (504) 952-9524.

**16" close contact Crosby Collegiate jumping saddle,** excellent condition. \$300 obo. Call Chris at (251) 342-8197 or e-mail [clschlecht@zebra.net](mailto:clschlecht@zebra.net) for additional information.

**Prestige Optimax dressage saddle.** Black, 17". No fittings. (985) 893-4500. \$2000.



Pink Girl Power! Jamie Barowka and Maria Cowan at the Juniors Schooling Show.

PHOTO COURTESY OF NIGOLE LANDRIEAU

off course

c/o Margaret Rice  
7048 Moniteau Court  
Baton Rouge, LA 70809



Established in 1975, the Southern Eventing and Dressage Association is a non-profit, educational organization founded to foster an interest in, and a understanding of, the equestrian sports of Dressage and Eventing. The Southern Eventing & Dressage Association is governed by the United States Equestrian Federation. We are also a Region 9 Group Member Organization of the United States Dressage Federation and an Area III & V Affiliate of the United States Eventing Association.



GMO



GROUP  
MEMBER  
ORGANIZATION

## SEDA OFFICERS & CHAIRS

### BOARD OF DIRECTORS

**PRESIDENT** | Lynn Quast  
504-905-3690 • lquast4184@aol.com

**VICE PRESIDENT** | David Banister  
985-796-3866 • francie12158@bellsouth.net

**SECRETARY** | Christy Sanantonio  
985-705-2235 • christy.sanantonio@gmail.com

**TREASURER** | Janel Martin  
985-796-8199 • janelmar@bellsouth.net

**DRESSAGE CHAIR** | Leslie Morris  
504-833-7923 • leslielm57@yahoo.com

**EVENTING CHAIR** | Elizabeth Cummins  
985-796-5011 • lizappy@hotmail.com

**MEMBERSHIP CHAIR** | Maria Cowan  
504-723-3407 • mariaec25@aol.com

**PUBLICATIONS CHAIR** | Nicole Landreaneu  
985-725-1137 • nmiller@millermark.com

### COMMITTEES

**AWARD CHAIR - ANNUAL** | Leslie Morris  
504-833-7923 • leslielm57@yahoo.com

**AWARD CHAIR - EVENTING** | Kimberly Schultz  
985-259-2580 • kabschultz@att.net

**AWARD CHAIR - RECOGNIZED DRESSAGE**  
Sally Richards • 985-809-7391 • gridweek@bellsouth.net

### AWARD CHAIR - SCHOOLING DRESSAGE

Deborah Epperson • 985-705-3644  
deborah.epperson@hotmail.com

**FLEUR DE LEAP 2011 CHAIR** | Elizabeth Cummins  
985-796-5011 • lizappy@hotmail.com

**JUNIOR/YOUNG RIDER CHAIR** | Paula Gregory  
985-778-9221 • connemara\_dressage@hotmail.com

**LE BON TEMPS 2011 CHAIR** | Janel Martin  
985-796-8199 • janelmar@bellsouth.net

**NOMINATING COMMITTEE** | Board Members

**OFF COURSE ADVERTISING** | Gloria Bush  
985-893-1910 • gbush17@charter.net

**OFF COURSE CALENDAR** | Gerlinde Beckers  
985-878-0210 • g\_beckers@yahoo.com

**OFF COURSE MAILING** | Margaret Rice & Barbara Merritt  
mrice8622@yahoo.com

**SCHOLARSHIP COMMITTEE CHAIR** | Elaine Harmon  
504-469-9652 • harmon692@aol.com

**VOLUNTEER HOURS CHAIR** | Carmen Hall  
504-388-3708 • chall@mcglinchey.com

**WEB SITE CHAIR** | Nicole Landreaneu  
985-725-1137 • nmiller@millermark.com

# EVENTS CALENDAR

**Please send calendar items to Gerlinde Beckers** at (985) 878-0210 or [g\\_beckers@yahoo.com](mailto:g_beckers@yahoo.com). SEDA events are in **bold**. Dates subject to change.

## JULY 2011

- 9-10 Chattahoochee Hills Horse Trials  
*Fairburn, GA*
- 16-17 Chattahoochee Hills Horse Trials  
*Fairburn, GA*
- 23-24 Windy Knoll Summer Dressage I & II  
(713) 703-9433  
*Magnolia, TX*

- 17-18 Windy Knoll Fall Dressage  
*Magnolia, TX*
- 17-18 The Last Dance USEF-licensed Dressage Show  
Judi Dauterive (985) 796 3712  
*Amen Corner Farm / Folsom, LA*
- 23-25 Poplar Place Horse September Horse Trials  
*Hamilton, GA*
- 30- Oct 2 Greenwood Farm Inc. Fall Horse Trials  
*Weatherford, TX*

- 3-6 GAIG/SWDC Region 9 Championships  
*Katy, TX*
- 4-6 Rocking Horse Classic 3-day & Horse Trials  
*Altoona, FL*
- 5-6 River Glen Fall Horse Trials  
*New Market, TN*
- 12 Pine Hill Fall Horse Trials  
*Bellville, TX*
- 12-13 Poplar Place Farm November Horse Trials  
*Hamilton, GA*

## OCTOBER 2011

- 30-31 Dallas Dressage Lemonade Daze I & II  
*Irving, TX*

- 1-2 Tryon Riding & Hunt Club Horse Trials  
*Landrum, SC*

- 12-13 Blue Angel Recognized Dressage Show  
Linda Lester (850) 862-6158  
[www.dsdcta.org](http://www.dsdcta.org)  
*Escambia County Equestrian Center / Pensacola, FL*

## AUGUST 2011

- 6-7 River Glen Summer Horse Trials  
*Newmarket, TN*

### **10 OFF COURSE DEADLINE**

- 27-28 Full Gallop Farm Horse Trials  
*Aiken, SC*

- 10 OFF COURSE DEADLINE**
- 8-9 Pine Top October Horse Trials  
*Thomson, GA*
- 8-9 Platinum Classic Dressage I & II  
*Katy, TX*

- 12-13 Amen Corner Schooling Dressage Show  
Judi Dauterive (985) 796 3712  
*Amen Corner Farm / Folsom, LA*

## SEPTEMBER 2011

- 2-4 Feather Creek Horse Trials  
*Norman, OK*

- 3-4 HDS Laborious Day I & II  
*Houston, TX*

- 7-11 American Eventing Championship  
*Fairburn, GA*

### **10-11 FALL FLEUR DE LEAP SCHOOLING CT/HT Lagniappe Farm / Folsom, LA**

- 10-11 San Antonio Fall Dressage I & II  
*San Antonio, TX*

- 15 Angola Prison Horse Auction  
[www.angolaprisonhorsesale.com](http://www.angolaprisonhorsesale.com)
- 15-16 WindRidge Farm Horse Trials  
*Landrum, NC*
- 15-16 Big Bear Horse Trials  
*Pine Mountain, GA*
- 15-16 Schooling Dressage Show  
Vicki Macgowan (985) 373-5464 or (985) 796-0317  
*Serenity Farm / Folsom, LA*

- 19-20 Ocala Horse Properties Fall Event  
*Ocala, FL*

- 19-20 Texas Rose Horse Park Horse Trials  
*Tyler, TX*

- 26-27 Pine Top Thanksgiving Horse Trials  
*Thomson, GA*

- 30 USDF Annual Convention and Symposium  
[www.usdf.org](http://www.usdf.org)  
*San Diego, CA*

- 17-18 Dallas Dressage Yellow Rose Festival  
*Irving, TX*

- 17-18 Corona Del Sol Horse Trials  
*Baird, TX*

- 28-30 Chattahoochee Hills Horse Trials  
*Fairburn, GA*
- 28-30 Holly Hill Fall Horse Trials  
*Benton, Louisiana*

## NOVEMBER 2011

- 1 SEDA SCHOLARSHIP DEADLINE**
- 2 Topsider Farm Dressage Two  
(976) 690-6788  
*College Station, TX*

## DECEMBER 2011

### **10 OFF COURSE DEADLINE**

- 10-11 Horses for Heroes Benefit Combined Test and Schooling Dressage Show  
Judi Dauterive (985) 796 3712  
*Amen Corner Farm / Folsom, LA*

## WHAT COMES WITH YOUR SEDA MEMBERSHIP?

ELIGIBILITY FOR SEDA AWARDS AND YEAR-END AWARDS BANQUET



SUBSCRIPTION TO THE NATIONAL AWARD WINNING *OFF COURSE* NEWSLETTER AND THE *USDF CONNECTION* MAGAZINE



ACCESS AND USE OF THE NATIONAL AWARD WINNING SEDA WEB SITE



LEADERSHIP OPPORTUNITIES TO SERVE ON THE BOARD OF DIRECTORS, CHAIR COMMITTEES, EVENTS, OR SHOWS, AND VOTING PRIVILEGES IN ALL ELECTIONS



NETWORKING OPPORTUNITIES WITH AREA EQUESTRIANS AND AN ANNUAL MEMBERSHIP DIRECTORY



MEMBER DISCOUNTS ON SEDA-SPONSORED CLINICS, SEMINARS, FUN PACES, AND ADVERTISING IN THE *OFF COURSE* AND ON THE WEB SITE



UP-TO-DATE EVENT INFO



ELIGIBILITY FOR USDF QUALIFIED RIDER AND MEDALS AWARDS

# Ride with SEDA!

Established in 1975, the Southern Eventing & Dressage Association is a non-profit, educational organization founded to foster an interest in, and understanding of, the equestrian sports of Dressage and Eventing. SEDA is a group member organization of USDF, affiliated with USEA, and governed by the United States Equestrian Federation.



Club activities include educational clinics and seminars, schooling shows, Le Bon Temps (a recognized dressage show), Fleur de Leap (an eventing show), fun paces, and an annual awards program. SEDA is one of the largest USDF affiliated clubs in Region 9 and growing. We invite you to join us in supporting, learning, and enjoying the sports of dressage and eventing in our area.

## SEDA APPLICATION/RENEWAL

Mail form & check (made out to SEDA) to: **MARIA COWAN, 624 EDENBORN AVE., METAIRIE, LA 70001**

The membership year begins December 1, 2010 and expires November 30, 2011. New members applying after October 1 will receive free membership for the balance of that year.

Senior \$55  Junior \$45  \*Family \$80  New Application  Renewal

Please Note: 1) To qualify for USDF Regional Championships you must be a **Participating Member** by joining USDF directly. 2) \$20 of your SEDA membership fee goes directly to USDF for your Group Membership. \*FAMILY is defined as two people at the same address.

NAME (PLEASE PRINT CLEARLY) \_\_\_\_\_

ADDRESS \_\_\_\_\_

CITY \_\_\_\_\_

STATE \_\_\_\_\_

ZIP \_\_\_\_\_

PHONE (INDICATE HOME / MOBILE / OFFICE) \_\_\_\_\_

E-MAIL \_\_\_\_\_

List names for \*Family Membership: \_\_\_\_\_

Birthdate(s) (*Juniors / Young Riders*) \_\_\_\_\_

Interest:  Dressage  Eventing  Both Number of horses leased/owned: \_\_\_\_\_

I am currently riding at \_\_\_\_\_ level in Dressage and / or level \_\_\_\_\_ in Eventing.

I am a  Adult Amateur  Steward  Technical Delegate

Instructor (level) \_\_\_\_\_  Judge (grade) \_\_\_\_\_

I am interested in volunteering!

Board  Clinics  Committees  Shows  Publications  Scribe  Steward  Media Relations

Tack Sales  Other \_\_\_\_\_

Please note: the SEDA Off Course newsletter is distributed electronically. Please make sure to include a valid e-mail address above. Printed copies will only be mailed to members who request it. Indicate your preference here:

Save a tree - electronic is fine  Please mail my newsletter